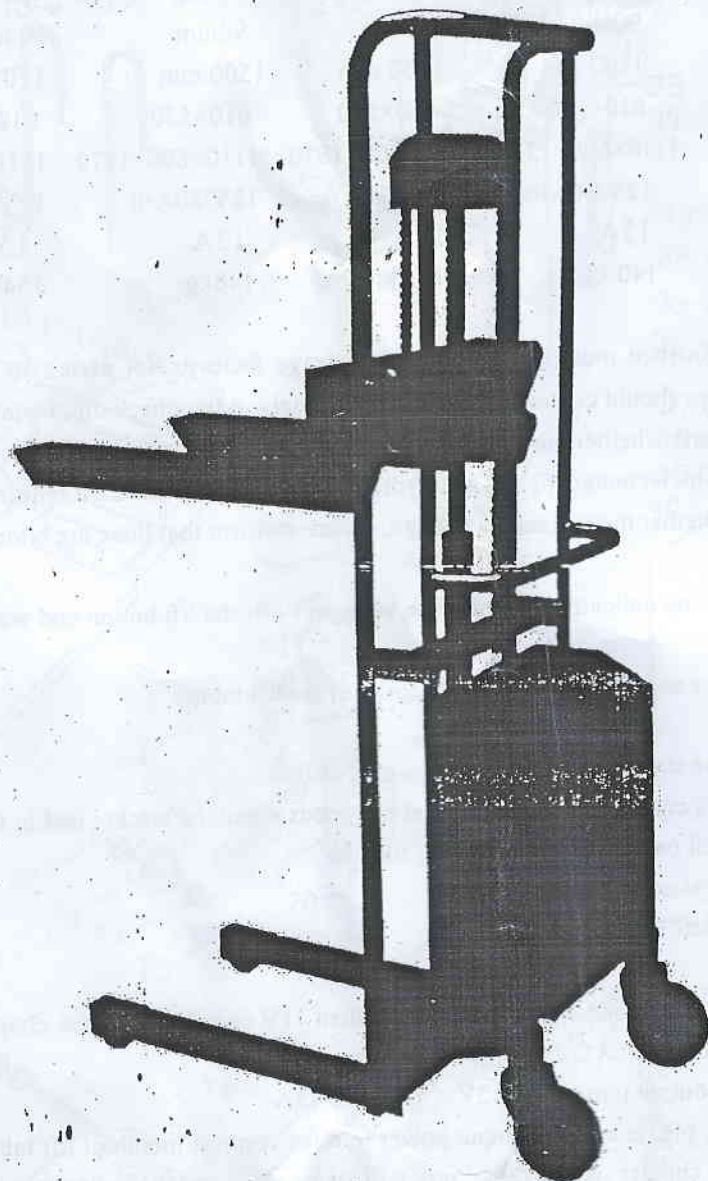


INSTRUCTION MANUAL ELECTRIC LIFT STACKER



Model: ETF40

ETF40 ELECTRIC LIFTING STACKER

I. Use & Character

ETF40 electric lifting stacker is designed on the base of hand-hydraulic lifting stacker and foreign high technical, which take in import hydraulic pump, high quality storage battery and charger. So this product can greatly reduce labor intensity and improve work efficiency.

II. Specification

Model	ETF40	ETF40	ETF40	ETF40
Rate capacity	400kg	400kg	400kg	400 kg
Lowest height	90mm	90mm	90mm	90 mm
Max. Height	1100 mm	1300 mm	1500 mm	1700mm
Table dimensions	610×550	610×550	610×550	610×550
Externality dimensions	1110×600×1370	1110×600×1570	1110×600×1770	1110×600×1970
Battery Voltage	12V/80A·h	12V/80A·h	12V/80A·h	12V/80A·h
Max. Charge current	15A	15A	15A	15A
Net Weight	140 kg	144 kg	148kg	154kg

III. Installing & Adjustment

1. The product had finished mostly assembly before leave factory, Not permit to use once there are damage during transport. you should contact the dealer immediately. After-check out, install the handle and use.

- ① Check the electric parts whether the parts loose or cut.
- ② Check the oil pipe which connect tightly and hydraulic oil arrive the standard required.
- ③ Check the battery whether the current are enough, please confirm that there are enough current before using.

2. Test

- ① Turn the key switch: the indicator will show the voltage. Push the lift button and watch whether the table lift up smoothly.
- ② Push the down button and watch the lowering down of the lift table.

IV. Using

- ① When transport it, the stacker must lie in the lowest position.
- ② Please assure the safe condition when you pallet the goods when the stacker lied in the high position.
- ③ The goods can not put on the stacker for a long time.
- ④ No permit to use the stacker on slope.
- ⑤ Don not use the stacker when raining.

V. charge for battery

- ① Turn the key switch, when the voltage shows lower then 11V or red line, please charge at once.
- ② Battery charge. input power: AC 220V 47-63Hz
output power: DC 12V YMC 12-15A
- ③ When start charging, please insert the input power into the connect mouth of lift table, then insert the AC plug. At last then turn the charger switch, the battery will start charge and the indicator will show the charge state.
- ④ Please change the good ventilate place with no naked, no electric spark and heat radiation when charging.

VI. Maintenance

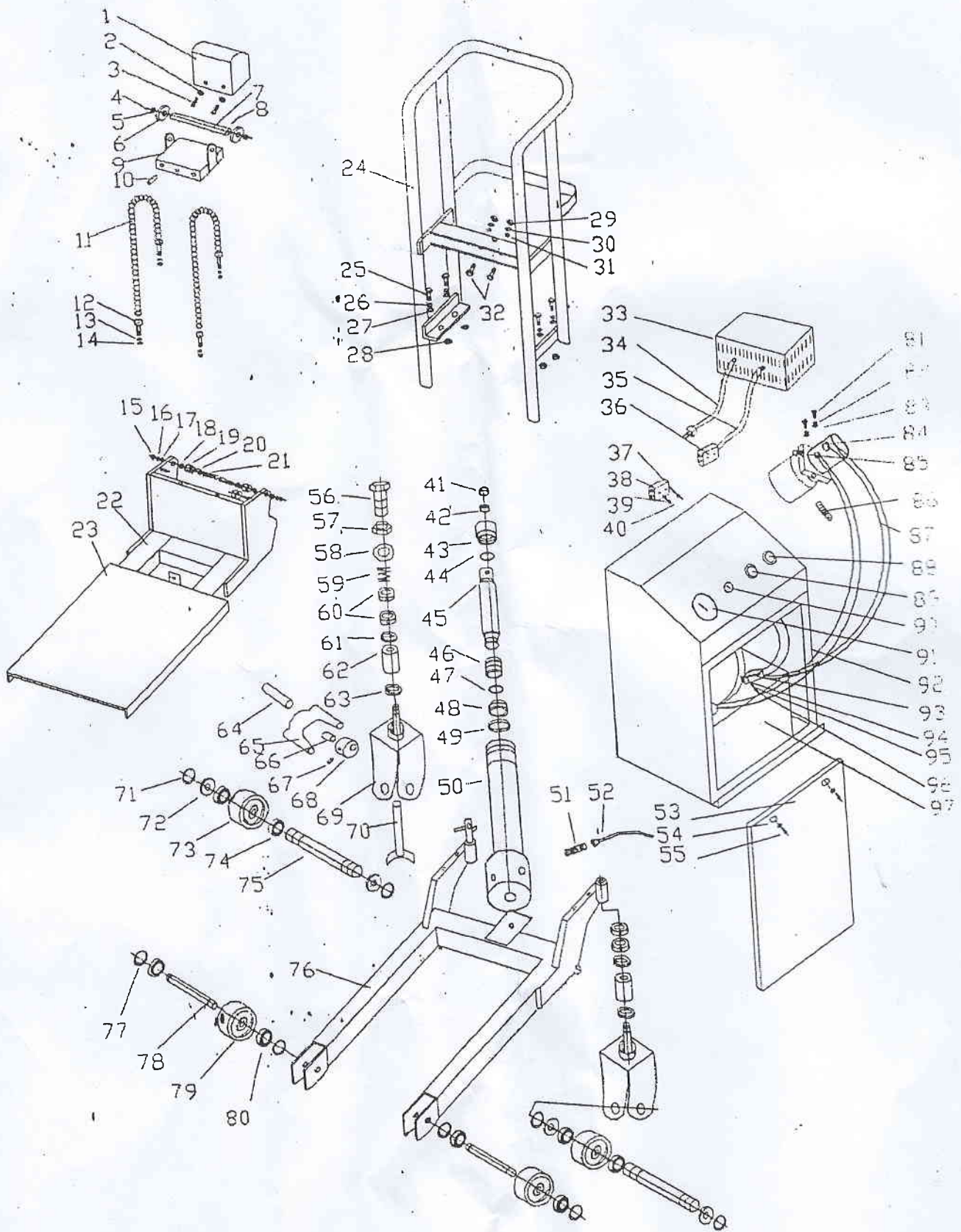
1. Check up the product regularly which can reduce the wear out and long-term use.
2. The battery is the power of the stacker, user should operate the products fully according to the manual and use it when the product with enough voltage to keep it in good condition.
3. Lift up the goods to the max. Height, check whether the hydraulic oil are enough. If not, please add YA-N32 oil or similar oil.

VII. Warning

1. Read and understand the instruction manual before assemble and operate.
2. Don not load the goods over the capacity.
3. When the table loads the goods, please not put your hands and foot under the table.
4. Don not put your foot on the pedal of the wheel when table is lowering down.
5. Put the goods on the some place of the table occupy more than 80% area of the table.
6. Don not move the cart when stacker with goods on the high site.
7. Don not use the cart on slope for safety.
8. Don not load the goods with bulk.
9. Please check the cart every day before using, once find the trouble should be repaired in time.
10. Trouble shooting

No	Description	Cause	Repairing
1	stacker can not lift up	a. Switch is not work good b. Hydraulic oil is not enough c. Oil seal worn out	a. Check and repair the switch b. Add oil c. Replace the oil seal
2	stacker can not lower down	a. Switch is not work good. b. Oil pipe block.	a. Check and repair the switch b. Check the oil pipe.
3	Electric motor not work	a. Electric Motor burn out: b. Plug loose. c. Battery worn out. d. Voltage is not enough.	a. Check and repair the electric motor. b. Check the plug. C. Replace the battery. d. Charger in time.

ETF40 ELECTRIC STACKER



ETF40 ELECTRIC STACKER

No.	Description	Qty	No.	Description	Qty	No.	Description	Qty
1	Chain Wheel Cover	1	41	Dust Cover	2	81	Hex Screw	2
2	Spring Washer	4	42	Oil Seal	1	82	Spring Washer	2
3	Semicircle Screw	4	43	Top Nut	1	83	Flat Washer	2
4	Hex Cap Bolt	2	44	O-ring	1	84	Pump Motor	1
5	Flat Washer	2	45	Lift Piston	1	85	Magnetic Valve	1
6	Chain Wheel	1	46	Piston	1	86	Oil Pipe Tie-in	1
7	Chain Wheel Shaft	1	47	Oil Seal	1	87	Battery Line	2
8	Spring Pin	1	48	Washer	1	88	Lift Button	1
9	Chain Wheel Seat	1	49	Hex Cap Nut	1	89	Down Button	1
10	Set Bolt	2	50	Cylinder	1	90	Key Switch	1
11	Chain	4	51	Oil Pipe Tie-in	1	91	Coulomb Meter	1
12	Chain Screw	4	52	Oil Pipe	1	92	Battery Box	1
13	Flat Washer	4	53	Box Cover	1	93	Battery Collect	2
14	Set Nut	4	54	Washer	2	94	Hex Cap Nut	2
15	Hex Cap Nut	4	55	Semicircle Screw	2	95	Washer	2
16	Spring Washer	4	56	Hex Cap Bolt	1	96	Hex Cap Bolt	2
17	Flat Washer	4	57	Hex Cap Nut	1	97	Battery	1
18	Bushing	4	58	Flat Washer	1			
19	Roller Guide	4	59	Spring Washer	1			
20	No Oil Bearing	4	60	Ball Nut	4			
21	Shaft	4	61	Bearing	2			
22	Fork	1	62	Bushing	2			
23	Platform	1	63	Taper Bearing	2			
24	Support Holder Assembly	1	64	Shaft	1			
25	Hex Cap Bolt	4	65	Brake Foot Pedal	1			
26	Spring Washer	4	66	Bushing	1			
27	Flat Washer	4	67	Set Screw	1			
28	Hex Cap Nut	4	68	Cam	1			
29	Hex Cap Nut	2	69	Swivel Wheel Holder	2			
30	Spring Washer	2	70	Brake Rod	1			
31	Flat Washer	2	71	C-ring	4			
32	Hex Cap Bolt	2	72	Dust Cover	4			
33	Charge	1	73	Wheel	2			
34	Charge Plug	1	74	Bearing	4			
35	Electric Line	1	75	Shaft	2			
36	50A Plug	1	76	Frame Seat	1			
37	Hex Cap Nut	2	77	C-ring	4			
38	50A Plug	1	78	Shaft	2			
39	Spring Washer	2	79	Small Wheel	2			
40	Semicircle Screw	2	80	Bearing	4			