

ELECTRIC ATV WINCH

(Permanent Magnet Motor)

Manual Instruction

- *Winch 1500lbs*
- *Winch 2000lbs*
- *Winch 2500lbs*
- *Winch 3000lbs*



Easy Off-Roading Adventure Starts from Our Winch

ELECTRIC ATV/UTV CABLE WINCH

Thank you for purchasing 1500lbs/2000lbs/2500lbs/3000lbs electric winch from us. Please read and understand this winch manual instruction before installing and using your winch.

General Description

Each winch is equipped with a permanent magnet motor and is designed for intermittent duty general use. Please be noted your winch are not designing to be used in industrial or hoisting applications, winch manufacturer goes not warrant it to be suitable for such usage. Free spool clutch is operated by a pull and turn knob winch disengages the gear box to allow the steel cable be pulled out without using electric power. A tension plate reduces backlash and snarling when pulling out the wire rope.

General Safety Information

1. Never lift people or hoist loads over people. Do not lift items vertically. The winch was designed for horizontal only.
2. Do not overload. For loads over 1500lbs/2000lbs/2500lbs/3000lbs, we recommend you to use a pulley block to double line the steel cable.(See Figure 1)
3. Do not attempt to prolonged pulls at heavy loads. This electric winch is designed for intermittent use only, and should not be used in a constant duty application. The duration of pulling job should be kept as short as possible. If the winch motor gets to be very hot, stop the winching operation and let it cool down for moments. Never pulling for more than one minute at or near to rated load.
4. Never winch with less than 5 turns of steel cable around the winch drum since the steel cable end fastener may not withstand full load.
5. Avoid continuous pulling from extreme angles as this will cause the steel cable to pile up on one end of the drum (See Figure 2). This can jam the steel cable in the winch, cause damage to the steel cable or the winch.
6. Be sure the input voltage between the terminals of motor is always DC 12V/24V in order to reach the max rated line pull drum the operation. Please note that it only could reach the max rated line pull by first layer of cable around the drum when pulling the loads.
7. Never hook the steel cable back to itself as it may damage your steel cable. You' d better use a nylon sling(See Figure 3)
8. Be sure the winch was mounted on the vehicle or other objective before operation.
9. When moving a load, take up the steel cable slack until it becomes taut. Be sure the hook is properly seated. If a nylon sling is used, check the attachment to the load.
10. It is a good idea to lay a heavy blanket or jacket over the steel cable near the hook end when pulling heavy loads (See Figure 3). If the steel cable failure occurs, the cloth will act as a damper and help prevent the rope from whipping.
11. Do not move your vehicle to assist the winch together could overload the steel cable and the winch.
12. Never work on or around the winch drum when winch is under load. (Keep away the winch at least 1.5m during the operation).

For further information please contact the nearest winch distributor.

ELECTRIC ATV/UTV CABLE WINCH

Electric ATV Winch 2500LBS

Performance Voltage	DC 12V / 24V
Rated Line Pull (Single Line)	2500lbs(1134kgs)
Motor	1.2HP Permanent Magnet
Gearing	Differential Planetary
Gear Ratio	153:1
Free Spooling Clutch	Pull and Turn
Wire Rope	ϕ4.8mm*12m
Dimensions	L*W*H(295*105*105 mm)
Drum Diameter & Length	31mm*72mm
Wireless Remote Control	Optional
G. W / N. W	28/26 kgs(4PCS/CTN)
Shipping Carton Size	49*34*37cm(4PCS/CTN)

Electric ATV Winch3000LBS

Performance Voltage	DC 12V / 24V
Rated Line Pull (Single Line)	3000lbs(1361kgs)
Motor	1.2HP Permanent Magnet
Gearing	Differential Planetary
Gear Ratio	153:1
Free Spooling Clutch	Pull and Turn
Wire Rope	ϕ5.5mm*10m
Dimensions	L*W*H(295*105*105 mm)
Drum Diameter & Length	31mm*72mm
Wireless Remote Control	Optional
G. W / N. W	28/26 kgs(4PCS/CTN)
Shipping Carton Size	49*34*37cm(4PCS/CTN)

For further information please contact the nearest winch distributor.

ELECTRIC ATV/UTV CABLE WINCH

- Do not cross over or under the steel cable when the winch is under load.
- When using your winch to move a load, place the vehicle transmission in neutral, set vehicle brake, and chock all wheels. The vehicle engine should be running during winch operation. If considerable winching is performed with the engine off, the battery may be too weak to restart the engine.
- Never release free spool clutch when there is a load on the winch.
- After operation, please release the load. Do not allow the cable tight any more.
- Always stand clear of steel cable, hook and winch.
- Inspect steel cable and equipment frequently. A frayed steel cable with broken strands should be replaced immediately. Use only factory approved switches, remote controls and accessories. Use heavy leather gloves when handling steel cable. Do not let steel cable slide through your hands.
- Keep clear of winch, taut steel cable and hook when operating winch. Never put your finger through the hook. If your finger should become trapped in the hook, you would lose your finger. Always use the hand saver bar when guiding the steel cable in or out.
- After operating the winch, re-spool the cable round the drum tightly.
- Do not operate winch when under the influence of drugs, alcohol or medication. Be sure to stay alert during the operation.
- Use eye and ear protection. Always wear impact safety goggles. Wear a full face shield you are producing metal filings or wood chips. Wear a dust mask or respirator when working around metal, wood, and chemical dusts and mists.
- Do not machine or weld any part of the winch. Such alternations may weaken the structural integrity of the winch and could void your warranty.
- Make some maintenance frequently for the winch.

Installation

Correct installation of your winch is required for proper operation.

- Mount the winch on the vehicle or other object using screw M8 x 30, Warning: This winch must be mounted with the steel cable in under wind direction. Improper mounting could damage your winch and void your warranty.
- Route the two couple of lines from the switch to the motor and battery respectively. Connect the red line to the positive terminal (+) and the black (or green) line to the negative terminal (—) of the 12V / 24V battery. Connect the two lines to the terminal on the motor of the electric winch (See Figure 4).
- Check the direction of the drum turning. Pull and turn the clutch knob to the "Off" position (drum can be turning free). Pull out the cable from the drum then engaged the clutch by turning the knob to the "In" position. Push the "Cable In" button on the hand holder, if the cable is re-spooling then it is right way for connection. Otherwise please change the line connected motor, and repeat the abovementioned operation.

For further information please contact the nearest winch distributor.

ELECTRIC ATV/UTV CABLE WINCH

Operation

- 1.Pull and turn the clutch knob to the "Off" position, so the drum can turn free by hand.
- 2.Grab the cable assembly hook and pull the cable to the desired length by hand saver bar. Then attach to item being pulled.
Warning: Check that there are at least five turns of steel cable on the drum before operation.
- 3.Engaged the clutch by turning the clutch knob to the "In" position.
Warning: Clutch must be fully engaged before winching. Never engage clutch knob while drum is turning. The clutch knob has been adjusted and permanently locked in place with a thread locking compound at the factory. Do not attempt to re-adjust the knob.
- 4.Push and hold the "Cable In" button on the handheld and the cable was re-spooled. Push and hold the "Cable Out" button to reverse directions. Wait until the motor stops before reversing directions.
- 5.Re-spooling cable after finish operation.

Maintenance

- 1.Periodically check tightness of mounting bolts and electrical connections. Remove all the dirt or corrosion that may have accumulated on the electrical connections.
- 2.Do not attempt to disassembly the gearbox. Disassembly will void warranty. Repairs should be done manufacture or authorized repaired center.
- 3.The gearbox having been lubricated using high temperature lithium grease at the factory. No internal lubrication is required.

Replace the Steel Cable

- 1.Engaged the clutch by turning the clutch knob to the "In" position.
- 2.When inserting the steel cable into the drum, insert it into the correct end of the hole provided. (See Figure 5). Tighten the set screw securely.
- 3.Operate the winch and re-spool the steel cable around drum. Always replace damaged steel cable with manufactures' identical replacement part.

Note: When steel cable rope turns to be rusty, we hereby suggest you stop using it. When one of the steel cable is broken, we also kindly advise you quit this steel cable.

For further information please contact the nearest winch distributor.

ELECTRIC ATV/UTV CABLE WINCH

Electric ATV Winch 1500LBS

Performance Voltage	DC 12V / 24V
Rated Line Pull (Single Line)	1500lbs(680kgs)
Motor	1.0HP Permanent Magnet
Gearing	Differential Planetary
Gear Ratio	153:1
Free Spooling Clutch	Pull and Turn
Wire Rope	¢4.8mm*12m
Dimensions	L*W*H(285*105*105 mm)
Drum Diameter & Length	¢31 mm*72 mm
Wireless Remote Control	Optional
G. W / N. W	28/26 kgs(4PCS/CTN)
Shipping Carton Size	49*34*37cm(4PCS/CTN)

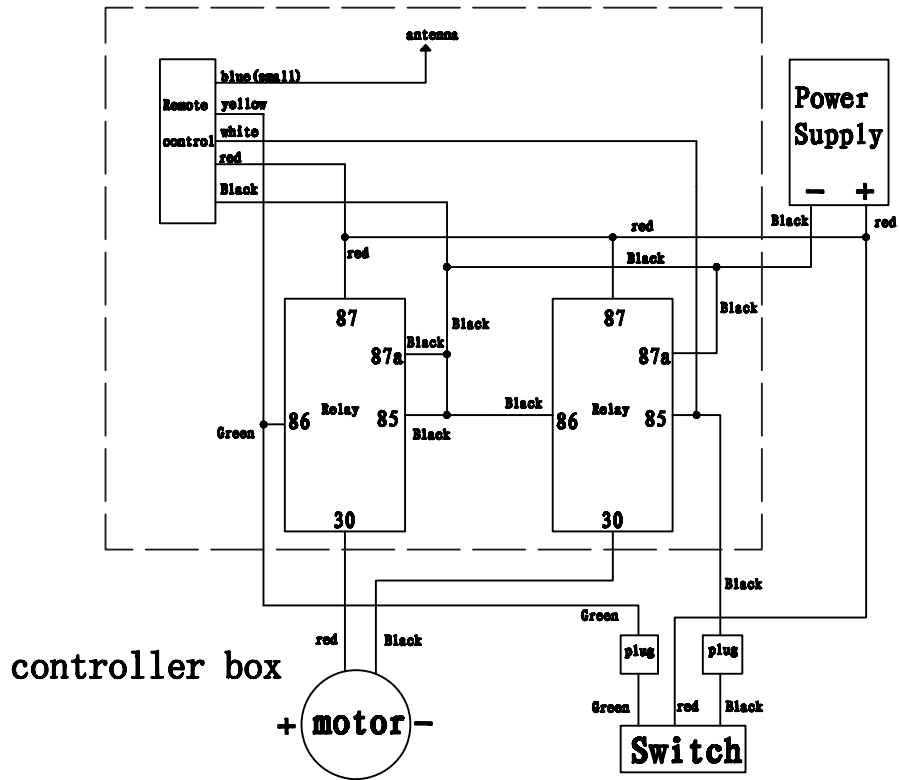
Electric ATV Winch 2000LBS

Performance Voltage	DC 12V / 24V
Rated Line Pull (Single Line)	2000lbs(907kgs)
Motor	1.0HP Permanent Magnet
Gearing	Differential Planetary
Gear Ratio	153:1
Free Spooling Clutch	Pull and Turn
Wire Rope	¢4.8mm*12m
Dimensions	L*W*H(285*105*105 mm)
Drum Diameter & Length	¢31 mm*72 mm
Wireless Remote Control	Optional
G. W / N. W	28/26 kgs(4PCS/CTN)
Shipping Carton Size	49*34*37cm(4PCS/CTN)

For further information please contact the nearest winch distributor.

ELECTRIC ATV/UTV CABLE WINCH

Electric ATV Winch Electrical Schematic



controller box



Switch

For further information please contact the nearest winch distributor.

ELECTRIC ATV/UTV CABLE WINCH

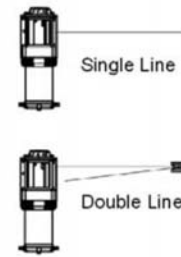


Figure 1

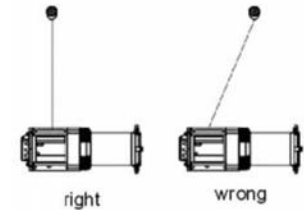


Figure 2

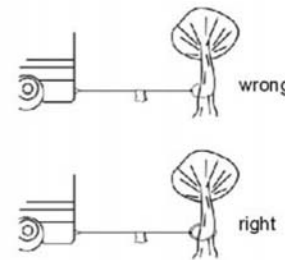


Figure 3

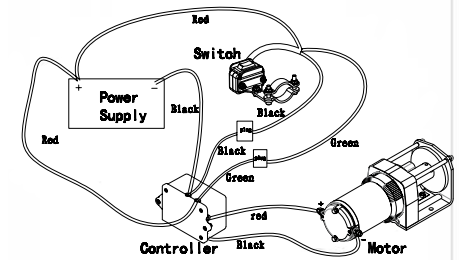


Figure 4

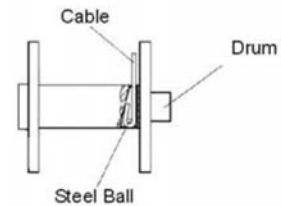


Figure 5

For further information please contact the nearest winch distributor.

ELECTRIC ATV/UTV CABLE WINCH

Electric Winch Spare Parts List

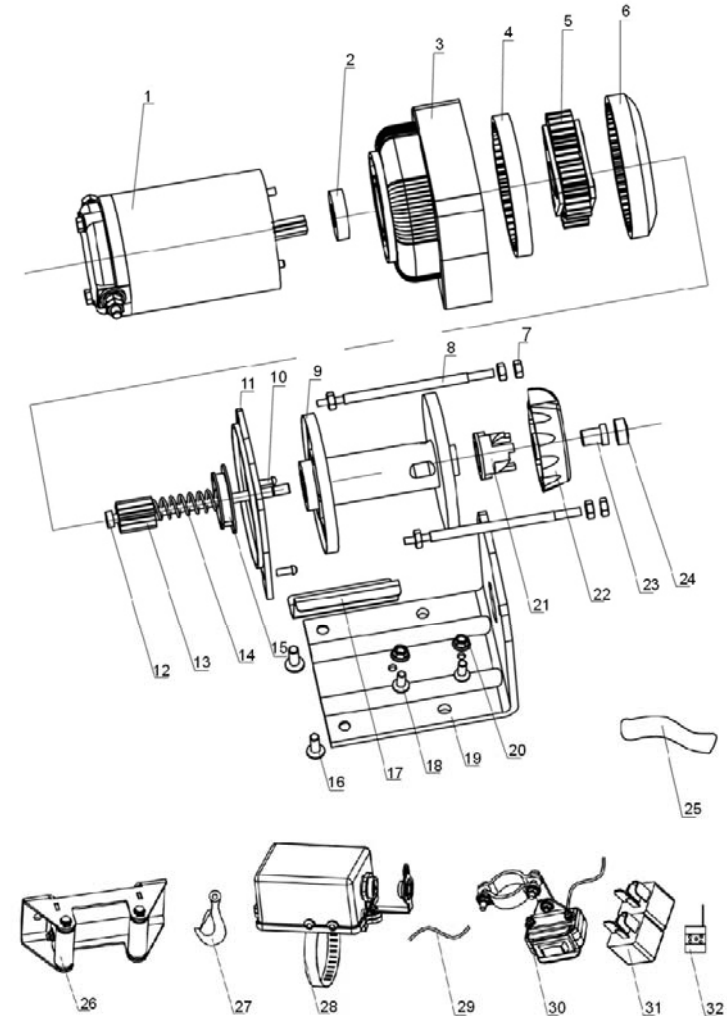
Part #	Description	Qty
1	Motor	1
2	Bearing	1
3	Gear Box	1
4	Inner Gear	1
5	Planetary Gear Assembly	1
6	Gear Plate	1
7	Hex Flange Nut M5	6
8	Fixed Adjustable Screw	2
9	Drum	1
10	Cross Pan Head Screw M4*10	2
11	Gear Box Flat	1
12	Rod	1
13	Connecting Gear	1
14	Joint-Back Spring	1
15	Bearing of Winch	1
16	Screw M6*15	2
17	Block-Rope Trestle	1
18	Screw M5*12	2
19	Bottom Plate	1
20	Hex Flange Nut M5	2
21	Cap of Winch Shaft	1
22	Handle	1
23	Facial Screw	1
24	Screw Cover	1
25	Yello Strap	1
26	Block-Rope Trestle Assembly	1
27	Sheep Hook	1
28	Electric Control Box Assembly	1
29	Wire	1
30	Switch Assembly	1
31	Relay	2
32	Wireless Switch	1

When ordering parts from this list, make sure to indicate that the part number was from the winch Parts List

For further information please contact the nearest winch distributor.

ELECTRIC ATV/UTV CABLE WINCH

Electric ATV Winch Exploded Drawing



For further information please contact the nearest winch distributor.