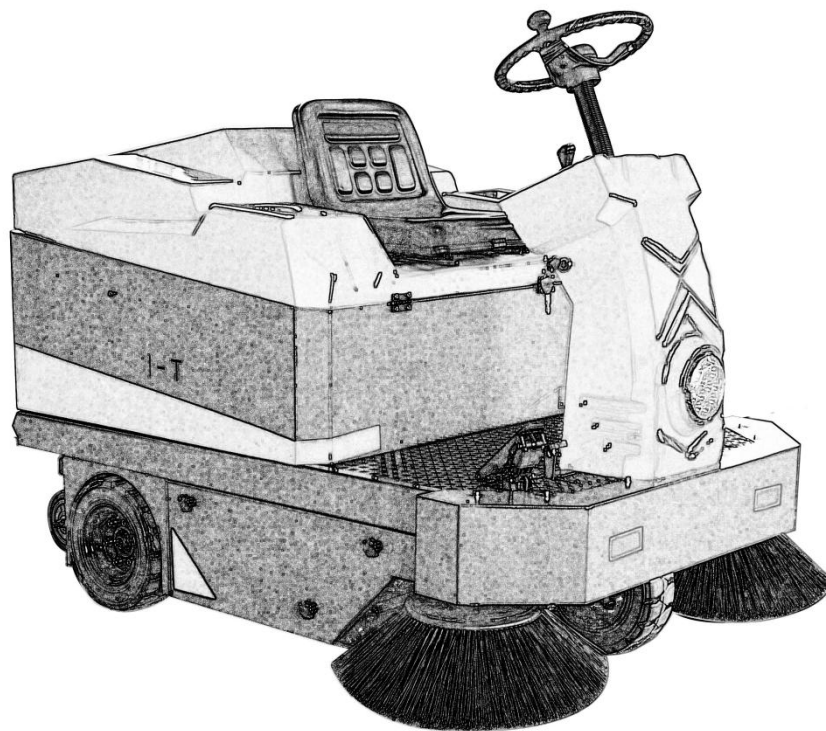


Operating instruction

KD-1400W



Pay attention to!!!

- 1、 this machine is used only as a cleaning tool, and for any other purpose than the instructions stated in this guide, we shall not be liable for any damage resulting therefrom.
- 2、 This sweeper can clean the general garbage, should not clean the rope, toxic and harmful, high temperature debris, so as not to wrap, burning the main brush and side brush, so that it can not work normally.
- 3、 The machine shall only be used by authorized and trained personnel.
- 4、 When the machine stops working, it must be parked on a flat ground.
- 5、 If personnel and children should be removed from the scene when the machine is used.
- 6、 The power key switch must be closed when opening the hood or machine for maintenance and maintenance. A power cable needs to be removed during mechanical maintenance.
- 7、 When transporting the sweeper, confirm that it has been securely tied to the carrier.
- 8、 Make sure that the battery is in the ventilated place when charging. IF the sweeper stops working or runs when the underpressure alarm occurs, the battery should be charged in time to extend the battery life.
- 9、 When completing the work, unplug the key in time to avoid the unrecognized use of the sweeper.

Sweeper operation instructions

Turn on the power switch to confirm that the machine power is normal; the normal voltage is 48 to 54 V, and 48 volts. Do not use power loss. The battery must be charged as soon as possible. It is forbidden to store it for a long time without electricity.

Do not use equipment to clean wires or packaging belts, otherwise ensure that the main brush shaft is cleaned every half a month.

To achieve the best cleaning effect, please adjust the driving speed according to the actual situation. When the machine works, the working speed should be controlled within 5 km/h. Do not pass through the areas of deep water.

During the operation, it is best to dust the filter at a specified time interval (25-30 minutes.) The dust time is to clean the dustbin to achieve the best cleaning effect.

Use the main brush for large area ground cleaning, use the edge brush only at the edge position.

Do not let the brush rotate when the machine does not move on. The height of the obstacle should not exceed 50mm. When passing, the large garbage baffle must be raised slowly and carefully driving over the obstacle. Fixed obstacle height exceeding 50mm can only be passed or bypassed using appropriate slopes.

After each use, the requirements to clean up the bin, it is strictly prohibited to accumulate to quickly over the bin volume to clean up.

The filter is cleaned once a week, remove the filter and clean it with an airgun or a brush. The filter is not clean for a long time, which affects the cleaning effect.

If the sweeper is not used for a long time, please place the sweeper on a flat ground, and charge the battery about once every two months.

This machine is an electric product, so it is strictly forbidden to wash the car body with water.

Equipment is used to clean the indoor/outdoor floor is not allowed for modification, do not use the machine as means of transport.

No cleaning/absorption of items burning or not extinguished.

When the user takes the start key from the machine.

Do not touch the heating part, such as a running motor, to avoid burns.

Only cross slopes below 20% or there is a risk of turning over.

When connecting the battery charger to the main circuit, ensure the voltage and frequency.

When the key switch is in the on (ON) position, do not connect and remove the battery, do not put tools or similar items on the battery, there is a risk of short circuit or even explosion.

Check the tightness of the brake regularly.

The machine is limited to personnel trained by the Company, and all consequences caused by the use shall be borne by other personnel.

Introduction of the sweeper parameters

content	parameter	unit
voltage	48	V
Clean the width	55	in
Main brush width	27.5	in
Brush the diameter	20	in
Working efficiency	64585-96878	sqft/h
Working time	4	h
Dumpster capacity	40	gal
Walking motor	1.6	hp
Rolling brush motor	1.07	hp
Brush the motor	0.13	hp
Speed of travel	0-12	Km/h
Battery capacity	150	ah
Water tank capacity	21	gal
Vehicle weight	1211	LB
Product size	73*55*55	in

The adjustment of brush

The main function of edge brush is to use its own rotation to collect the garbage on both side to the middle, from the main brush to the dustbin. The advantage of edge brush is that it can sweep out the garbage at the corners and dead corners, and improve the cleaning efficiency.

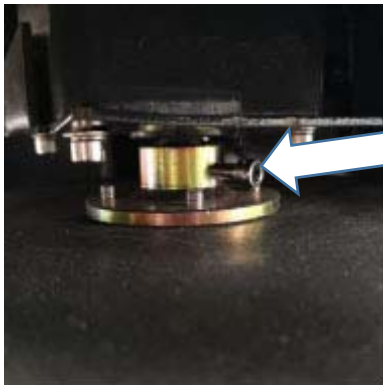
Under normal work conditions, the brush should be slightly bent from the ground to contact with the ground, the brush is too low from the ground, easy to cause load heat overload, will accelerate the wear of the bristles. Side brush height adjustment method: adjust the nut 1 shown in the figure, so that the brush slightly contacts the ground from the ground height.

The side brush height adjustment as shown in the figure, both sides need to be adjusted, adjust the length of the screw to achieve the height of the main brush from the ground. Normal cleaning side brush contact with the ground 3-5mm, not too close to the ground.

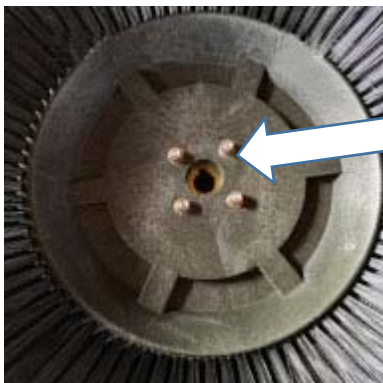
**Brush the high and low adjustment
screw on the side**



Replacement of brush



**Remove Hexagon Screw 1 from
motor shaft**



**Open the sweeper and brush the 4
hands under the screw screws**

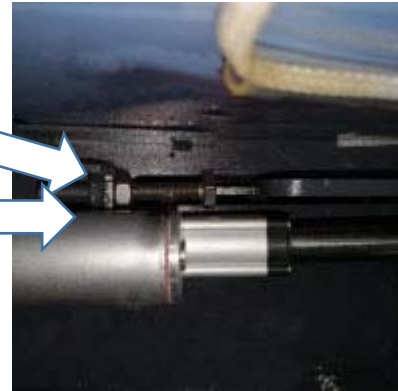
Adjustment of main brush

The width of the main brush touching the ground should be 2-4mm. When the main brush touches the ground too wide, the normal operation of the machine will be affected, and the spare parts are easy to heat up, reducing the service life of the machine.

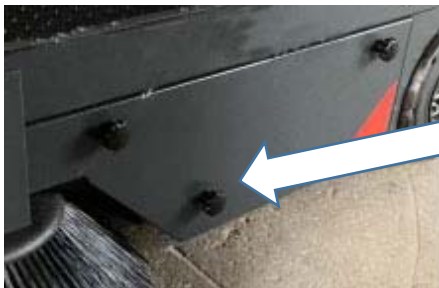
The main brush height adjustment as shown in the figure, lift the shell, adjust the length of the screw out to achieve the height of the main brush off the ground. Normal clean the main brush contact with the ground 3-5mm, not too close the ground.

Screw elongation lift main brush

Screw shortening drop main brush



The replacement of the main brush



Unscrew the 3 hand screw screws on the lower guard plate



Unscrew the 4 hand screw nuts on the rocking arm and baffle, and remove the rocking arm and baffle



Take out the main brush. Follow the reverse steps to install the master brush

Filter cleaning and replacement

The garbage filter element needs to be checked regularly. When the filter cannot be cleaned or damaged, it needs to be replaced.

As shown in the following figure, clean the filter element steps:

- 1、 Unplug the dust motor plug;
- 2、 Unscrew the 4 hand screw nuts;
- 3、 Unplug the filter element to clean the filter element. Replace the filter element by removing the six inner hexagonal screws in the illustration.

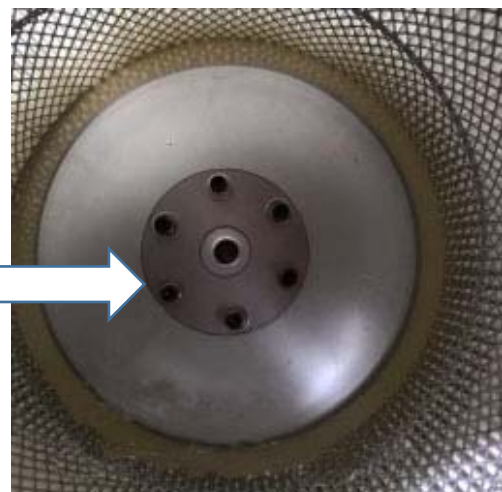
4 Hand screw nuts



Filter element disassembly:

Disassemble the six inner

hexagonal screws



Common fault description

question	cause	handle
The sweeper leaks too large leaves or large particles of garbage	Work too fast	Reduce the speed of working
	The brush pressure is too small	Adjust the pressure of the brush
	The bristles are deformed or wrapped with filaments	Remove the winding material
The sweeper left dust or dust on the floor from the side baffle	The filter is blocked	Clean the filter
	Fender damage	Check the retaining cover and replace it if damaged
Cleaning is not thorough, leaving scraps of paper, leaves or other rubbish	The front skin lift agency has no work	Repair the winding material
The brush wears too fast	The brush was pressed too tight	Reduce brush pressure
	The floor is very rough	
Too much noise at work	The bristles are wound with filaments	Remove the winding material
	Bearing bad	Replace the bearing
	The brush is over pressed	Reduce the pressure
The brush does not rotate while working	The transmission belt is damaged	Replace the belt
Brush and fan motor are not working	Blown fuse	Change the fuse
The car cannot move forward and go backward	Damaged pedal governor	Replace the governor
	Brake pedal position fault	Check the brake pedal reset intact
	Brake switch fails	Replace the brake switch
	Controller damage	Replace the controller
The battery cannot be charged	The charger is not energized	Check the charger input power supply
	The battery burned	Replace the battery
	charger	Check the charger for any output
	Battery terminal is loose	Check and tighten the battery terminals
The battery discharges too fast	Insufficient charging time	Increase charging time

	The battery burned	Replace the battery
	Charger damage	Replace the charger
The electric dust device is not working	Switch bad	Change the switch
	The fuse burned	Change the fuse
	The motor load is too large	Check and reduce the load
	Motor damage	Replace the motor
	Bearing wear and tear	Replace the bearing
The brush can work normally and cannot drive normally	Problems with controller,fuses,drive motor,governor,brake switch	Check the input/output voltage,indicator lamp,fuse,drive motor,and connection line

Thank you very much for choosing our product. Before the sweeper is put into use, please read the instructions carefully and strictly follow them to achieve the best cleaning effect and extend the life of the machine. Please contact us for your comments and suggestions. We warmly and quickly serve you.