



Model:
LD-AU4010

Product Type: page 1
Super Stand
- Universal Rotating Parts Work Stand

Foreseen Use of the Tool

Do not use the tool outside of the design intent.
Never modify the tool for any other purpose, or for its use.



Safety Precaution

Caution: To help prevent personal injury

- **Normal use of this product is likely to expose the user to dust and/or microscopic particles containing chemicals known to the State of California to cause cancer, birth defects or other reproductive harm. Always wear appropriate safety equipment and clothing when using this product. Study, understand and follow all instructions provided with this product.**
- **Always wear ANSI approved goggles when using this product.**
- **Hand/Wrist/Arm injury may result from repetitive work motion exposure to vibration.**

Product Information

- The Universal Super Stand can handle any panel, fender, door, hood, or bumper to make repairs and refinishing easy
- The Super Stand comes with 8 adjustable bars to fit almost any panel securely
- The Super Stands portability allows for fast and easy moving of the part from the prep. station to the spray booth
- The Super Stand's unique design allows for single handed rotation of panels 350 degrees in 16 degree increments
- Weight capacity: 200lbs

Important

Read these instructions carefully before installing, operating, servicing or repairing this tool. Keep these instructions in a safe accessible place.



www.toolots.com

1 YEAR LIMITED WARRANTY

Toolots, Inc warrants our products to the original user against defective material or workmanship for a period of 1 year from the date of 1st use. Astro reserves the right to determine whether the product failed because of defective material, workmanship or other causes and to charge back for missing parts. Astro Pneumatic Tool Co., at its discretion, will repair products covered under this warranty free of charge. The original user is to return the product (with the exceptions listed below) with the distributor's name, address, adequate proof of date of purchase or a copy of warranty card, and a short note explaining the problem. **Failures caused by accident, alteration, or misuse are not covered by this warranty.**

Toolots, Inc or its authorized service representatives must perform all warranty repairs. Any repair to the product by unauthorized service representatives voids this warranty. The rights under this warranty are limited to the original user and may not be transferred to subsequent owners.

This warranty is in lieu of all other warranties, expressed or implied, including warranties of merchantability and fitness for a particular purpose. Some states do not allow the exclusion of limitations of incidental or consequential damages so the above limitations may not apply to you. All claims must be sent to:

Toolots, Inc
16300 Shoemaker Ave.
Cerritos, CA 90703

⚠ PLEASE DO NOT RETURN ANY PRODUCT WITHOUT CALLING 844-866-5687 FOR INSTRUCTIONS. ⚠

Unpacking

When unpacking, check the parts diagram and part number listing on page 3 to make sure all parts are included. If any parts are missing or damaged, please call your distributor.





Model:

LD-AU4010

Product Type:

**Super Stand
- Universal Rotating Parts Work Stand**

page 2

LD-AU4010 Assembly Instructions

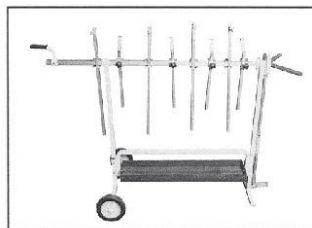
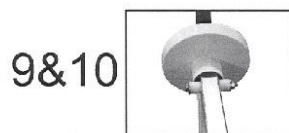
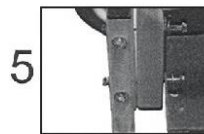
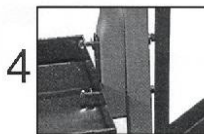
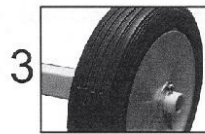
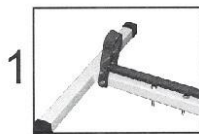
PRIOR TO BEGINNING ASSEMBLY COMPARE PARTS TO PARTS LIST TO ASSURE THAT ALL PARTS ARE INCLUDED.

- 1) Attach pedal on front brace (#9) with nut (#9E) & bolt (#9D) to the bottom of the front brace. Completely secure nuts & bolts. Remove temporary bolt at top of front brace and discard.
- 2) Align the holes on the wheel poles (#12) to the holes of the rear brace (#11). Attach the wheel poles to rear brace with bolts (#11A), washers (#9C) and nuts (#9B). Completely secure nuts & bolts.
- 3) Attach wheels (#13) to wheel pole (#12). Position the wheels and large washer (#15) onto the wheel pole (#12) and secure into place by inserting cotter pin (#14) into predrilled holes in the wheel pole. Slightly spread ends of cotter pins to assure wheels will not fall off wheel pole.
- 4) Align the holes on the fixed pole, the holes on the brackets of the tray and the holes on the front brace (#9). Attach with bolts (#9A), washers (#9C) and nuts (#9B). Do not completely secure.
- 5) Attach the rear brace (#11) to the fixed pole (#10) and tray (#16) by repeating procedure in step 4.
- 6) Completely secure nuts & bolts used in steps 4 and 5.
- 7) Press down pedal and insert the adjustable gear wheel (#5) into the hole at the top of the front brace (#9) assuring that the predrilled hole on the adjustable gear wheel is facing up.
- 8) Insert stand pole (#6) onto the adjustable gear wheel (#5).
- 9) Insert stand pole (#6) through hole of rear brace (#11) and onto stand extension pole (#7). Secure stand extension pole to stand pole by tightening screw (#7A) on extension.
- 10) Align the holes of the adjustable gear wheel (#5), stand pole (#6), plastic bushing (#6C), and washer (#6B) and completely secure with nut (#6D) & bolt (#6A).
- 11) Handle (#8) to be used for moving stand for storage only. Do not use to move stand while parts are mounted on stand.

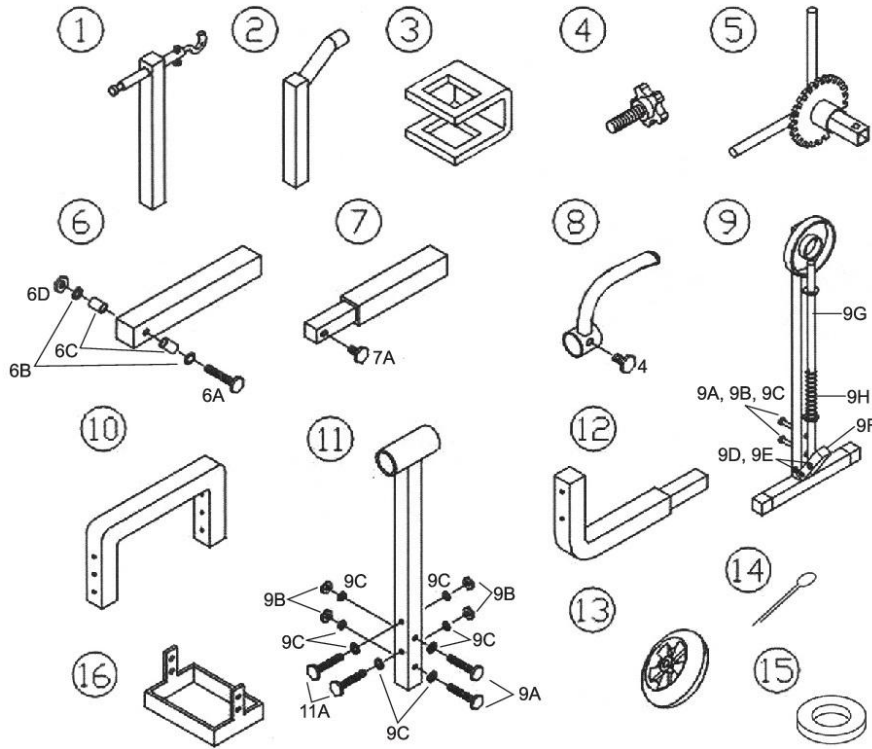
NOTE: When mounting parts onto "Super Stand" select the appropriate suspend arm (#1) or prop arm (#2) for the job. Do not begin work until you have checked and assured that parts are securely mounted onto "Super Stand"



ALWAYS WEAR ANSI APPROVED SAFETY GLASSES AND CLOTHING WHEN USING THIS UNIT.



PARTS BREAKDOWN



Parts List

Part No.	Description	Qty	Part No.	Description	Qty	Part No.	Description	Qty
4010-01	Suspend Arm	4	4010-7A	Bolt	1	4010-10	Fixed Pole	1
4010-02	Prop Arm	4	4010-08	Handle	1	4010-11	Rear Brace	1
4010-03	Buckle	8	4010-09	Front Brace	1	4010-11A	3 1/2" Rear Brace Bolt	2
4010-04	Knob	9	4010-9A	3" Bolt	4	4010-12	Wheel Pole	2
4010-05	Adjustable Gear Wheel	1	4010-9B	Nut	6	4010-13	Wheel	2
4010-06	Stand Pole	1	4010-9C	Washer	12	4010-14	Cotter Pin	2
4010-6A	Stand Bolt	1	4010-9D	Pedal Bolt	2	4010-15	Large Washer	2
4010-6B	Stand Washer	2	4010-9E	Pedal Nut	2	4010-16	Tray	1
4010-6C	Plastic Bushing	1	4010-9F	Pedal	1			
4010-6D	Stand Nut	1	4010-9G	Front Bar	1			
4010-07	Stand Extension Pole	1	4010-9H	Front Spring	1			



Model:

LD-AU4010

Product Type:

Super Stand

- Universal Rotating Parts Work Stand

page 4

PART MOUNTING INSTRUCTIONS FOR MODEL LD-AU4010

Due to the universal nature of this unit and its capabilities to mount many types of automobile parts, mounting instructions must be given in a general manner. When mounting any part you must first determine what would be the safest way to secure the automobile part to the Part Stand.

- 1) Begin by examining the specific part that is being mounted and look for holes on the part that will allow the Suspend Arm (part #1) or Prop Arm (part #2) to be inserted into.

Hints:

- Select holes that are as close to the size of the hook/straight mount for best support.
- Select holes at the furthest point on the part being mounted for better support.
- Suspend Arm and/or Prop Arm can be set at an angled position for wider range and support.
- Suspend Arms and Prop Arms can be used separately or in conjunction.
- Suspend Arms have hook on one side and straight mount on opposite side. Depending on size of hole selected to mount part, select which will secure part best.
- Prop Arms have holes at the end which can be used to secure part being mounted. If part being mounted has a lip/tab with hole, align the hole on the Prop Arm with the hole on the lip/tab and secure by using a nut & bolt (not included).

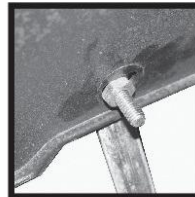
- 2) Begin mounting process by deciding length necessary for Suspend Arm/Prop Arm. Secure Suspend Arm/Prop Arm into place by tightening knobs.
- 3) Mount part onto Suspend Arm/Prop Arm. Before proceeding to next step, assure that part is secure and weight is well distributed and will not cause stand to tip over.
- 4) Next, mount bottom of part to Suspend Arm/Prop Arm. Follow instructions in step 1.
- 5) Assure that part is mounted securely. Test by slowly rotating part.

IF YOU NEED
FURTHER ASSISTANCE PLEASE
CONTACT YOUR NEAREST DISTRIBUTOR, OR
Toolots, Inc AT
844-866-5687

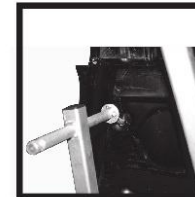
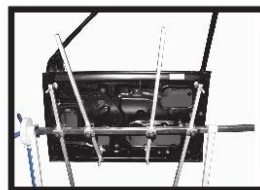
www.toolots.com

MOUNTING SOLUTIONS

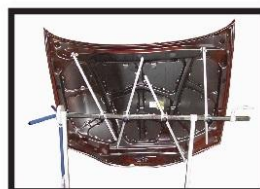
BUMPER



DOOR



HOOD



CHROME

