

Warranty

1. This machine is guaranteed for 1 year from the date of purchase.
2. Read the instructions and safety instructions carefully before using the cutter.
3. During the warranty period, normal wear and artificial damage of consumable parts will not be guaranteed. If it is not correctly operated according to the operation instructions, the user or the person who removes and repairs it by himself will not be guaranteed.



Fully automatic model number: 1200 #



Fully automatic model number: 1200 #



Manual model number: 1200 #



Manual model number: 600 #

ELECTRIC CERAMIC TILE/STONE CUTTING

ELECTRIC CERAMIC TILE/STONE CUTTING

Product Specifications

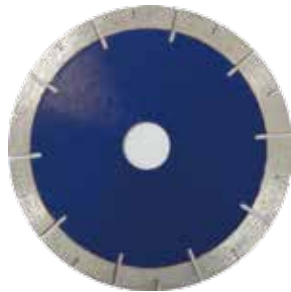
Model	8808
Voltage	1Phase 110V~60Hz
Rated Power	2300W
No Load Speed	12000r/min
Max. Cutting Depth	1.18inch (30mm)
Min. Cutting Angle	50°
Blade Size	φ120mm X φ20mm X 1.8mm
Weight	35-65KG
Accessories	1pcs of Tools Bag 1pcs of Instruction

Accessories Purchase

Note: the accessories are specially used for cutting machines referred to in this manual.

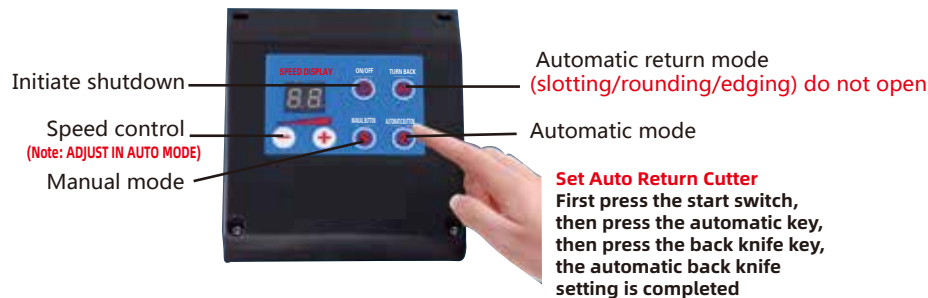
Diamond Blades

Please select the original cutting pieces to achieve maximum efficiency. Non original cutting pieces will cause edge collapse and uneven cutting.



Dia. 120mm
Inside Dia. 20mm
Thickness 1.8mm

Panel



Safety Tips

The following is a list of safety precautions when using the cutter, please be sure to strictly follow. Or it may damage tools or body.

1. Do not use diamond cutting blades that do not meet the performance specified by the manufacturer.
2. Do not use damaged, deformed or cracked cutting pieces.
3. Do not start the cutter when the cutting blade is in contact with the workpiece.
4. Replace the cutting blade, adjust the cutting depth, and maintain the water pipe. Press the leakage protection switch on the plug, and the cutting machine is in the power-off state.
5. Keep your hands away from the sawing area or diamond blade at all times. If you hold the safe place of the cutter with both hands, you will not be hurt by the saw blade.
6. Always use the diamond saw blade with proper size and axis shape. If the diamond saw blade does not match with the parts of the cutting machine, the eccentric operation will cause equipment damage.
7. Do not use the damaged washer and bolt which are not in accordance with the size. Using the damaged washer and bolt will lead to improper operation and the equipment can not operate normally accurately.
8. When using this machine for automatic cutting, the cutting speed should be adjusted slowly and the speed should be increased slowly, so as to avoid the damage of the object to be cut and the blocking of the machine caused by the too fast automatic cutting speed of the machine.
9. After cutting, the motor idling for two minutes is conducive to the discharge of water vapor inside the motor and prolong the service life of the motor.

ELECTRIC CERAMIC TILE/STONE CUTTING

ELECTRIC CERAMIC TILE/STONE CUTTING

Warning: the use of non original accessories, easy to cause damage to the cutting machine, and even personal injury.

Special Safety Tips

Note: read the operation and safety tips carefully before operating the machine. Please read carefully before operating the machine.

When using the cutting machine, the following safety rules should be observed to prevent fire, electric leakage and personal injury:

1. Keep the working site clean: disordered and disorderly may lead to accidents.
2. Pay attention to the working environment: do not work in wet and dark places and where flammable liquids and gases are stored.
3. Beware of electric shock: should not be close to other equipment, such as heating and cooling machine, refrigerator, etc.
4. Keep away from outsiders / children: keep children away from the work area, and other people must keep a safe distance.
5. Keep the cutting machine properly: the unused cutting machine should be stored in a dry place and at a height beyond children's reach.
6. Do not change the purpose of use at will and abuse the cutting machine.
7. It is better to wear rubber gloves and anti-skid rubber shoes. Long hair with working cap.
8. Use goggles and masks if there is a lot of dust in the working area.
9. Do not pull the cable and pull out the plug from the power supply. Cables should be kept away from heat sources and oil, and avoid contact with sharp objects.
10. Keep the body stable: the steps should be steady and steady during operation, pay attention to keep the body posture stable.
11. Keep the cutting machine clean and cutting blade sharp, can give full play to the performance. The accessories should be lubricated and replaced in time according to the instruction manual. Check the cable and extension cable regularly and replace it immediately if it is damaged.
12. Cut off the power supply in time: before resting or changing the saw blade, form the good habit of cutting off the power supply in time.
13. Keep the outer packing box properly for storage and protection of cutting machine.

Product List



- | | | |
|-------------------|-------------------|----------------|
| 1 Cutting Machine | 5 Cardan Support | 9 Casters |
| 2 4*Brackets | 6 Cutting Blade | 10 Toolkits |
| 3 Support Bars | 7 Edging Wheel | 11 Water Pumps |
| 4 Removal Tools | 8 Lateral Support | |

ELECTRIC CERAMIC TILE/STONE CUTTING



Start Switch:

When turning on the green start switch, it should be noted that there is no debris on the worktable, the cutting blade and the workpiece must be kept at a certain distance, the children should be far away, and there should be no contact between the body parts, so safety must be the first.



Travel switch:

When the cutter cuts to the specified size, the cutter needs to stop. Loosen the fixed screw of the travel switch and adjust it to the required position. When the spring screw on the cutter touches the switch contact, the whole machine will stop working. The cutter will return to the original point and press the green start switch to start the next cycle.

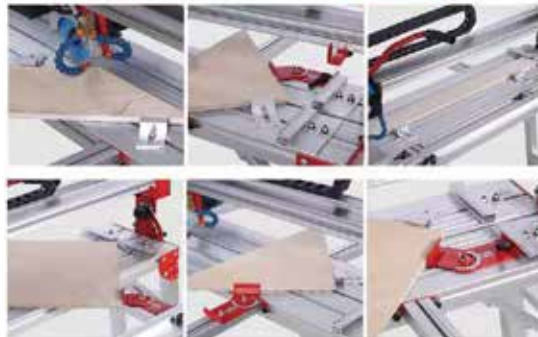


WATER PUMP POWER OUTLET:

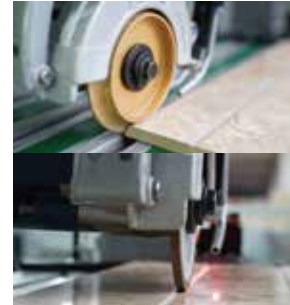
The water pump power socket is a motor linkage device. When the cutting machine is working, the water pump adapter is directly inserted into the water pump power socket. When the cutting machine work pump automatically start working, motor stop pump also stop working.

The use of Universal Angle Adjustment Backer:

When the workpiece is not quadrilateral, need diagonal cutting, according to the actual situation of the workpiece adjust diagonal straightness, and then start cutting.



ELECTRIC CERAMIC TILE/STONE CUTTING



Grooving and edge grinding:

When the workpiece is slotted or edging, replace the special knife wheel, adjust the horizontal big backrest before work, ensure that the cutter wheel can walk out of the end of the workpiece, have enough stroke, adjust the water jet angle of the nozzle, must meet the cutting requirements, the bigger the flow, the better, adjust the cutting height of the cutter wheel to the processing dimension.



0-45 ° oblique cutting:

Loosen the adjustable screw at the end of the worktable, turn the whole gantry beam to the specified angle, lock the adjustable screws at both ends, place the workpieces on the worktable level, lean against the horizontal large buttress, adjust the support of the wide exhibition stand to be vertical to the horizontal large support, push forward the required cutting size according to the scale, lock the support, and then start cutting to keep the flushing position and water flow (larger The better).



Cutting:

When the back of the workpiece is adjusted in place, start cutting.

1. First of all, keep a certain distance between the cutting piece and the workpiece as the starting point. Turn on the working state, check that the water outlet of the water pump is unobstructed, the water nozzle is correctly aligned with the front corner of the cutting blade. Press the green start key, and the stroke feed motor starts to work.
2. The speed control knob switch in the upper left corner is a stepless speed regulating switch. The speed can be selected according to the material of the workpiece. The more it is turned to the right, the faster the speed will be.
3. Some materials are more brittle tiles, in the cutting blade is about to end, adjust the cutting speed, let the speed slow down, the cutting machine out of the head travel switch will automatically stop the machine.

Reminder:

Special attention should be paid when pulling back. When holding the handle, the handle must be gently pushed forward and then pulled back. The cutting machine is pulled back to the starting point, and the workpiece is installed for the next cycle.