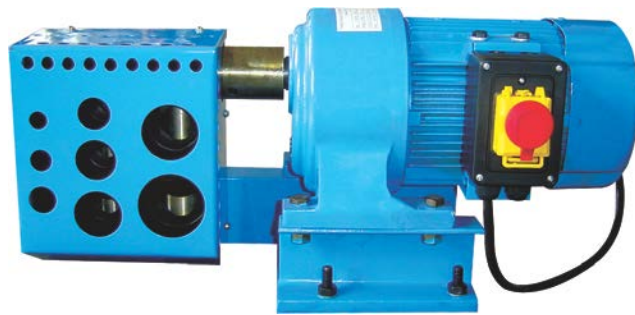


# Electric Pipe Notcher

**Model: PTN12U**



**Operation Manual**

## **Save this manual**

You will need the manual for the safety warnings and precautions, assembly instructions, operating and maintenance procedures, parts list and diagram. Keep your invoice with this manual. Keep the manual and invoice in a safe and dry place for future reference.

## **Safety Warnings and Precautions**

**WARNING: FAILURE TO FOLLOW THESE RULES MAY RESULT IN SERIOUS PERSONAL INJURY** As with all machinery there are certain hazards involved with operation and use of the machine. Using the machine with respect and caution will considerably lessen the possibility of personal injury. However, if normal safety precautions are overlooked or ignored, personal injury to the operator may result.

This machine was designed for certain applications of cold metal cutting, for example, cutting larger rod steel. We strongly recommend that this machine SHOULD NOT be modified and/or used for any application other than for which it was designed. If you have any questions about its application, do not use the machine until you contact with us and we have advised you.

**Read all instructions before using this tool!**

## **SAFETY INSTRUCTIONS**

1. **Keep work area clean.** Cluttered areas invite injuries.
2. **Observe work area conditions.** Do not use machines or power tools in damp or wet locations. Don't expose to rain. Keep work area well lighted. Do not use electrically powered tools in the presence of flammable gases or liquids.
3. **Keep children away.** Children must never be allowed in the work area. Do not let them handle machines, tools, or extension cords.
4. **Store idle equipment.** When not in use, tools must be stored in a dry location to inhibit rust. Always lock up tools and keep out of reach of children.
5. **Do not force tool.** It will do the job better and more safety at the rate for which it was intended. Do not use inappropriate attachments in an attempt to exceed the tool capacity.
6. **Use the right tool for the job.** Do not attempt to force a small tool or attachment to do the work of a large industrial tool. Do not use a tool for a purpose for which it was not intended.
7. **Dress properly.** Do not wear loose clothing or jewelry as they can be caught in moving parts. Protective, electrically non-conductive clothes and non-skid footwear are recommended when working. Wear restrictive hair covering to contain long hair.
8. **Use eye and ear protection.** Always wear ISO approved impact safety goggles. Wear a full-face shield if you are producing metal filings or wood chips. Wear an ISO approved dust mask or respirator when working around metal, and chemical dusts and mists.

9. **Do not overreach.** Keep proper footing and balance at all times. Do not reach over or across running machine.
10. **Maintain tools with care.** Keep tools sharp and clean for better and safer performance. Follow instructions for lubricating and changing accessories. The handles must be kept clean, dry, and free from oil and grease at all times.
11. **Stay alert.** Watch what you are doing; use common sense. Do not operate any tool when you are tired.
12. **Check for damaged parts.** Before using any tool, any part that appears damaged should be carefully checked to determine that it will operate properly and perform its intended function. Check for alignment and binding of moving parts; any broken parts or mounting fixtures; and any other condition that may affect proper operation. Any part that is damaged should be properly repaired or replaced by a qualified technician.
13. **Guard against electric shock.** Prevent body contact with grounded surfaces such as pipes, radiators, ranges, and refrigerator enclosures.
14. **Replacement parts and accessories.** When servicing, use only identical replacement parts. Use of any other parts will void the warranty. Only use accessories intended for use with this tool. Approved accessories are available from the distributor.
15. **Do not operate tool if under the influence of alcohol or drugs.** Read warning labels on prescriptions to determine if your judgment of reflexes are impaired while taking drugs. If there is any doubt, do not operate the tool.
16. **Don't leave machine** until it comes to a complete stop.
17. **Make sure machine is disconnected from power supply** while making maintenance, adjustment or repair
18. **Always keep hands and fingers away from the blade.**
19. **Avoid accidental starting.** Make sure switch is in "OFF" position before plugging in power cord
20. **Ground all machines.** Always make sure your machine is well connected to the earth. It may reduce electric shock hazards.
21. **Don't use in dangerous environment** . Don't use power machine in damp or wet locations, or expose them to rain. Keep work area well lighted
22. **Stop machine** before servicing and when changing accessories such as blades, etc

**Note:** The warning and instructions contained in this instruction manual cannot cover all possible conditions and situations that may occur when using this product. It must be understood that common sense and caution are factors, which cannot be built into this product. These factors must be supplied by the person whom operating this piece of equipment.

## INTRODUCTION OF THE MACHINE

### 2.1 USAGE:

This machine is used only for general metals cutting within the range of cutting capacity.

### 2.2 Requirement of operating site

THIS MACHINE IS DESIGNED FOR OPERATING ON THE SITE:

- The height above sea level doesn't exceed 1000m;
- The temperature range of air doesn't exceed 5°C~40°C.
- The relative humidity doesn't exceed 50% at a maximum temperature of +40 °C .
- Higher relative humidity may be permitted at lower temperature (e.g.90% at 20°C)
- lighting of the work zone should be at least 500lux
- Lightning sign indicates strong power, please pay attention to the sign when using for 5,

### 2.3 Connecting the Pipe Notcher PTN12U to POWER SOURCE

The electrical rating of PTN12U is 230V or400V, 50Hz or 110V 60Hz ,Before connecting your machine to an electrical power system, be sure the motor rating agrees with the electrical system that is to be connected to. We recommend using cable of at least H07RN 3G 1.5mm<sup>2</sup> to connect with the socket. The user should also provide an overcurrent protector with rated current of 5A in the supply circuit.

PE conductor of the power cable must be firmly connected to the earth.

### 2.4 Features of the Pipe Notcher PTN12U

1. For tubes with max up to 3mm wall thickness steel.
2. For jointing and welding together of tubes in a 90 angle.
3. Several tube diameters combined in one device.
4. Horizontal and vertical operation.
5. Also suitable for double connection.

## Operation

This machine is a special tool used to cut tubes into R arc at the end, with up to 3mm wall thickness steel. Before using, clean all the spare parts and install the machine according to the Assembly diagram. Fix the machine horizontally or vertically on table when you can ensure the cutting block could move easily inside.

There are several diameters holes in the machine:

PTN12U for 1/4", 3/8", 1/2", 3/4", 1", 1-1/4", 1-1/2", 2"

When using, put the end of the pipe into the relevant hole, finish the cutting by turning the handle.

**Attention**

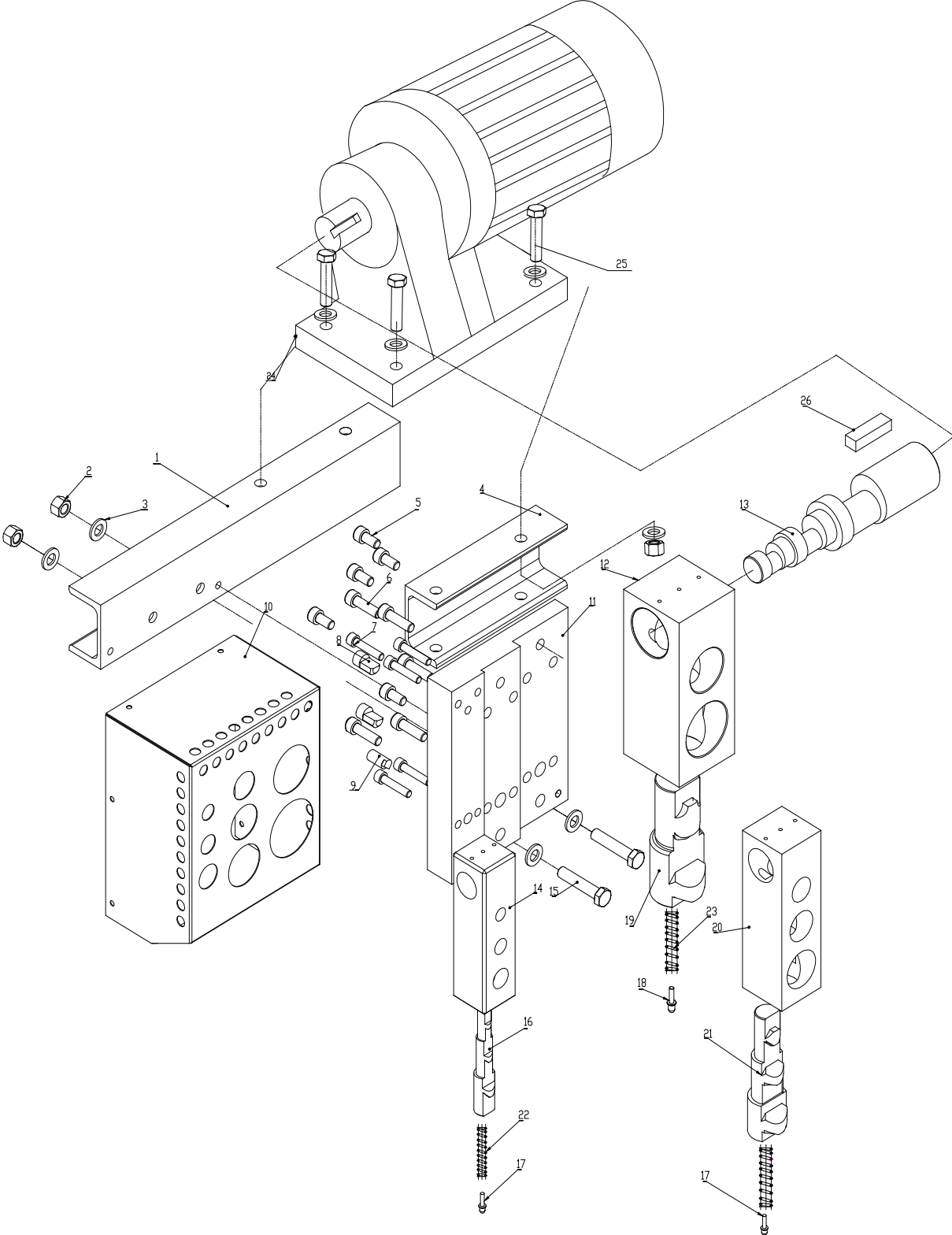
Only one size pipe could be cut at one time.

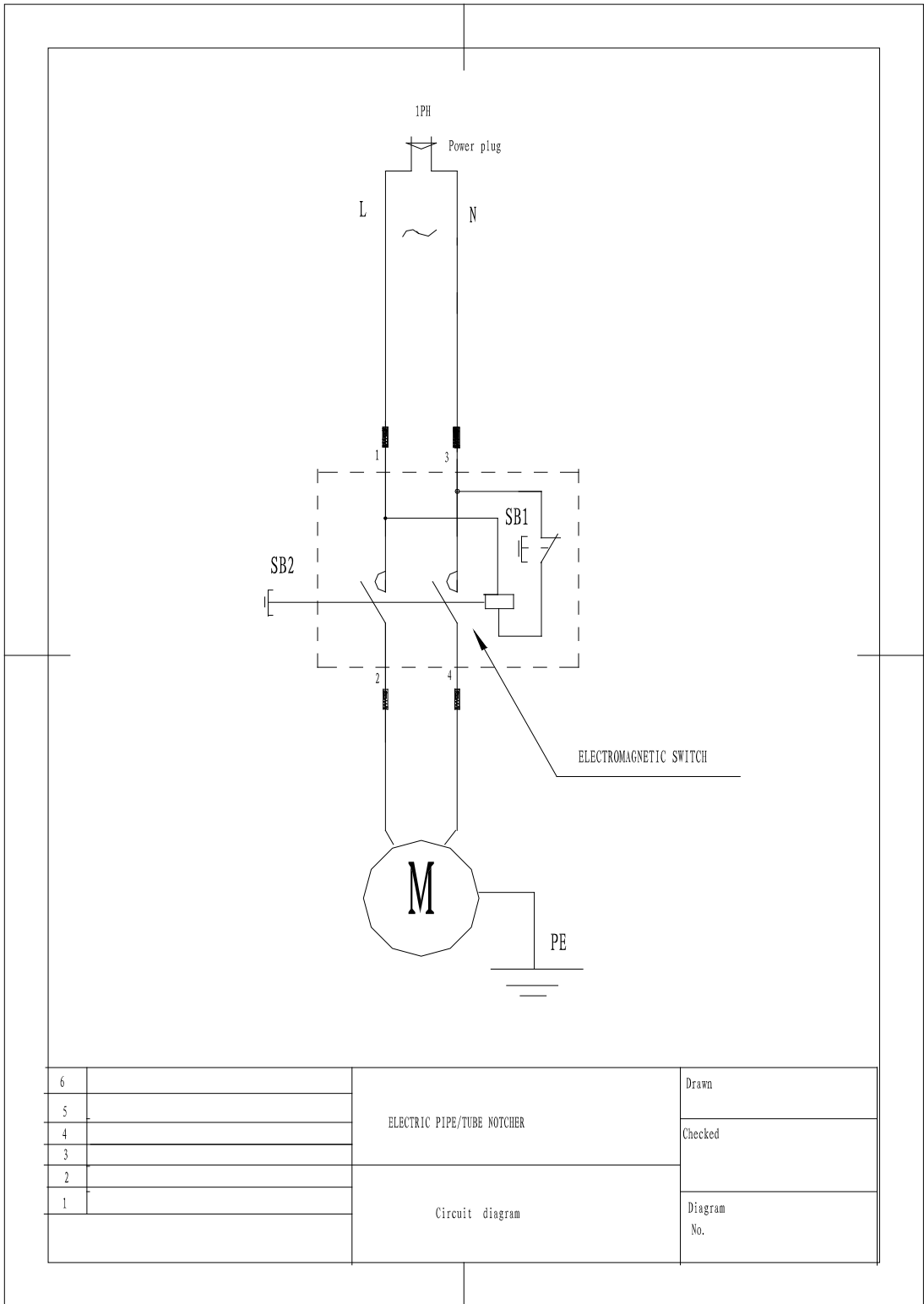
There should be no scraps in the holes during operation.

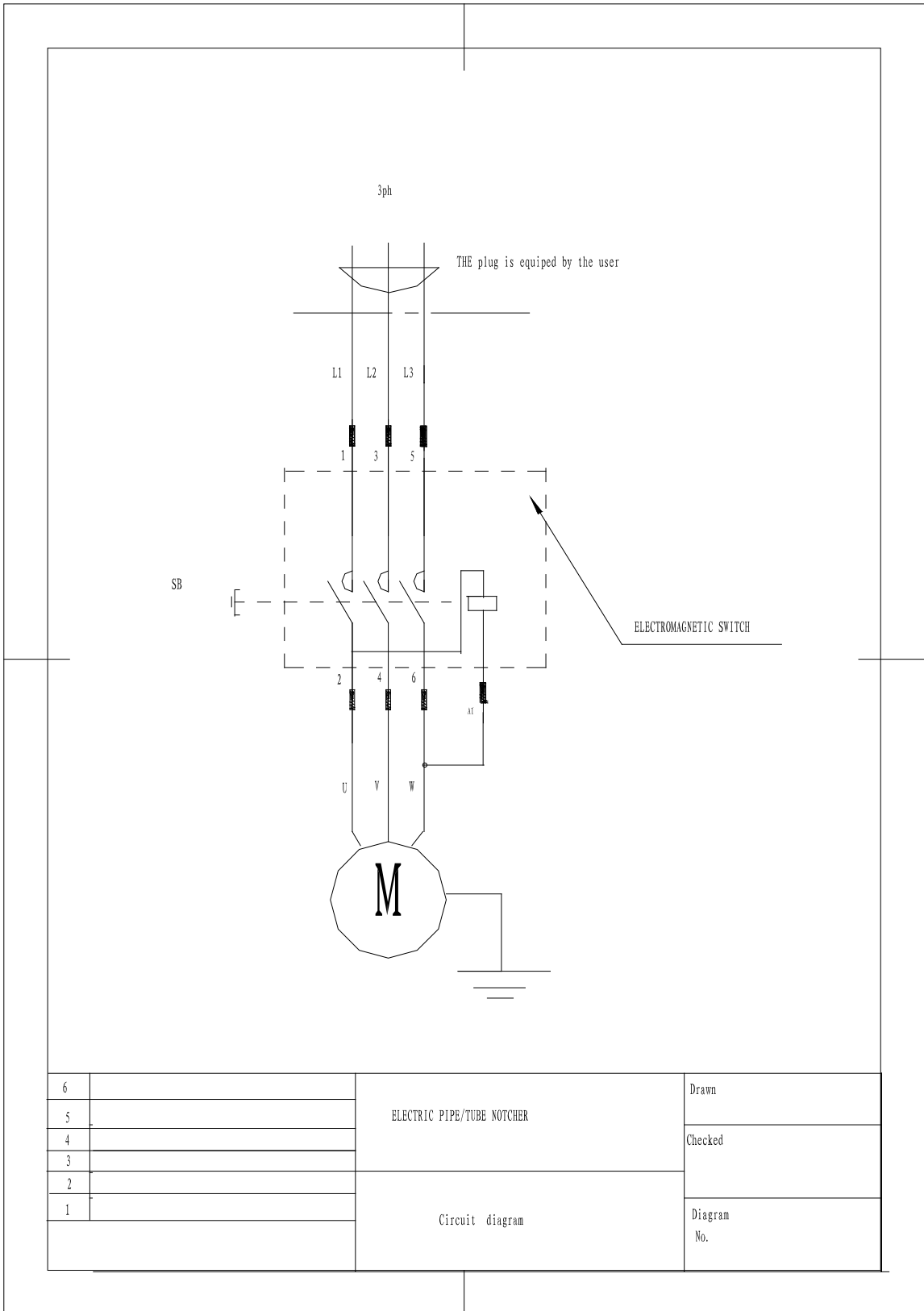
**PARTS LIST of PTN12U**

Part#	Description	Qty.	Part#	Description	Qty.
1	Stand I	1	14	Body I	1
2	Clamp Screw	6	15	Bolt M12 x 60	2
3	Adapter washer	12	16	Blade I	1
4	Stand II	1	17	Pin	2
5	Bolt M10 x20	5	18	Pin	1
6	Bolt M10 x35	5	19	Blade III	1
7	Bolt M10 x40	5	20	Body II	1
8	Pin	2	21	Blade II	1
9	Pin	2	22	Spring	1
10	Cover	1	23	Spring	2
11	Joint Plate I	1	24	Motor	1
12	Body III	1	25	Bolt M10 x50	4
13	Eccentric shaft	1	26	Key	1

# EXPLODED DRAWING of PTN12U









Note: This manual is only for your reference. We reserve the right to improve the machine without notice. Please note the local voltage for operating this electric machine.