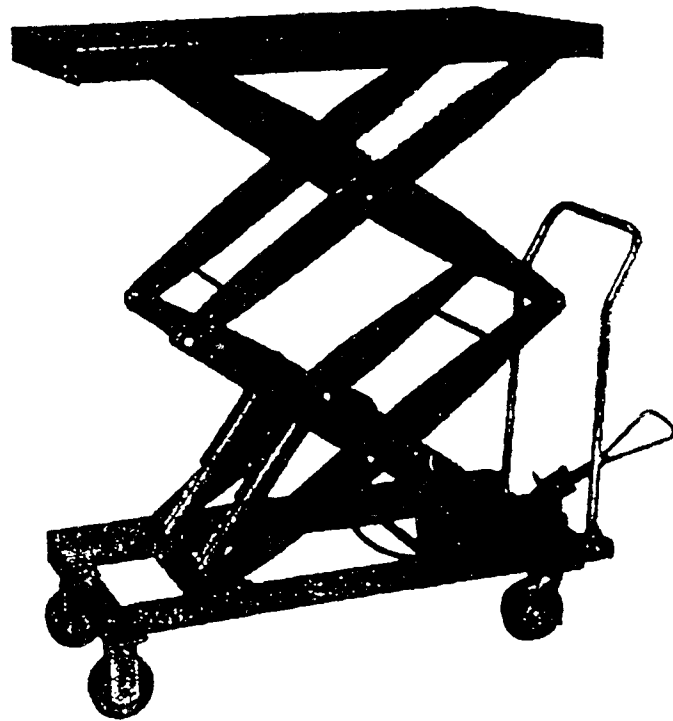


INSTRUCTION MANUAL

TWO SPEED HYDRAULIC TALBE TRUCK



Model: TF 75SD/100SD

INSTRUCTION MANUAL

TF75SD/TF100SD TWO SPEED HYDRAULIC TABLE TRUCK

1. Brief instruction

I. Use & applicable range

It is a convertible vehicle using for lifting and transporting in workshop, workshop, warehouse and wharf, etc.

2. Basic Data:

Model	TF75SD	TF100SD
Load Capacity (kg)	750	1000
Table Size L×W (mm)	1200×610	1200×610
Maximum Height (mm)	1700	1700
Minmum Height (mm)	500	500
Total Length (mm)	1600	1600
Total Height (mm)	1000	1000
Net Weight (kg)	240	260
Packing Dimensions (mm)	1400×620×520	1400×620×520

3. Installation

- I. Draw out the pin in the foot pedal and put the foot pedal into the foot pedal holder, then use the pin to fix them.
- II. Put the handle on the frame seat and fix it by 4×M10 bolt.
- III. Turn out the discharge bolt, after put the foot pedal board to tighten the bolt.

4. Using

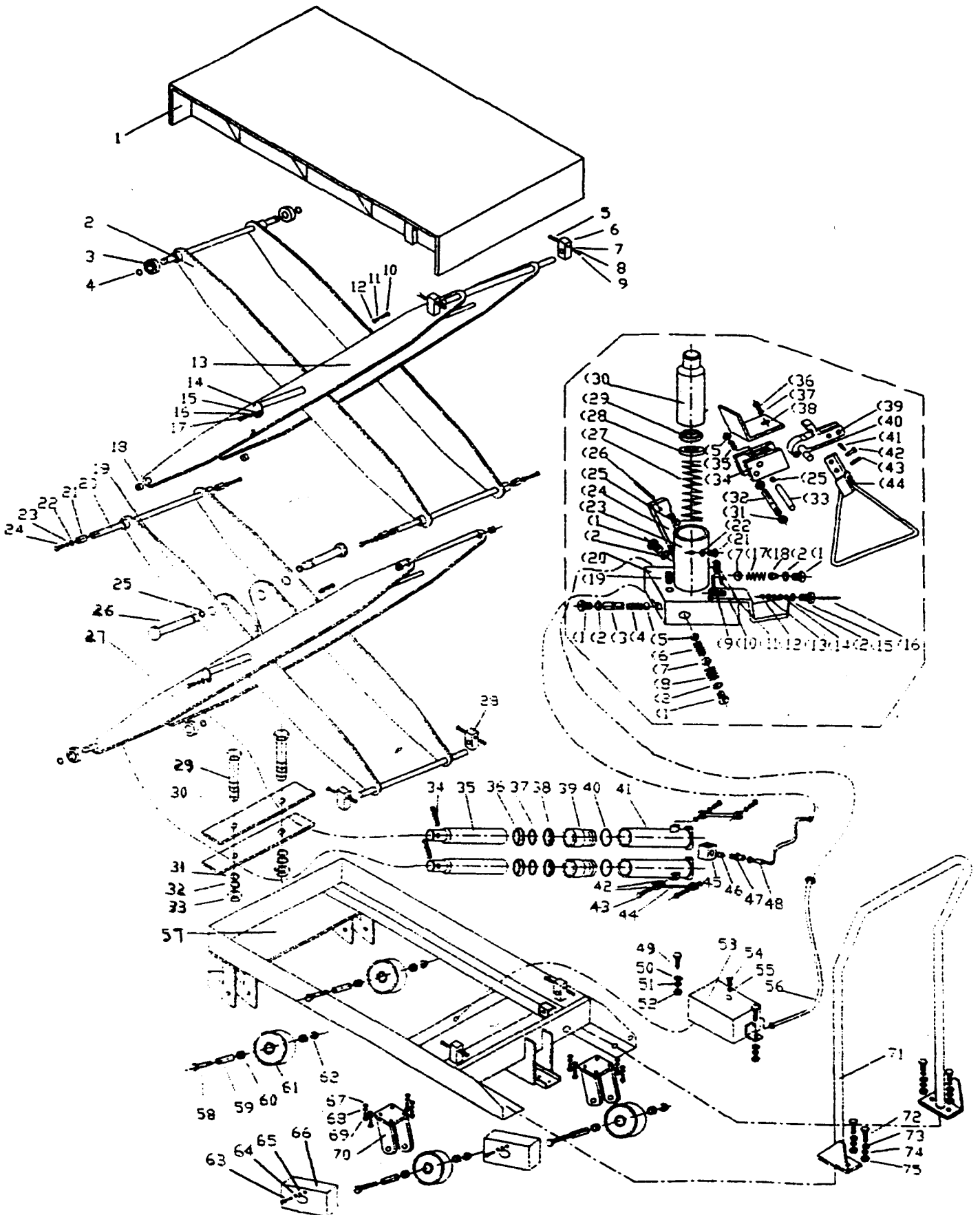
- I. Please test the unload cart before using. Step the foot pedal equably by foot to lift the platform to the max height.
- II. Please lock the brake on the wheel before loading.
- III. Please load and unload the goods in the rate capacity of the cart.
- IV. Please step the discharge switch to descend down the cart.

5. Warning!

- ① Read and understand the owner's manual before assembly and operation.
- ② Do not load scissor lift beyond its rated capacity.
- ③ Do not allow people to sit or ride on scissor lift.
- ④ Secure load before raising or moving scissor lift
- ⑤ Do not transport loads in the raised position.

- ⑥ Use only on smooth finished floors.
- ⑦ Pull release lever slowly to allow load to descend in a controlled manner.
- ⑧ Keep hands and feet clear of table when lowering load.
- ⑨ Failure to comply with the above warnings may result in personal injury and/or property damage.

TF75SD/100SD TWO SPEED HYDRAULIC TABLE TRUCK



TF75SD/100SD Two Speed Hydraulic Table Truck

No.	Descriptions	Q'ty	No.	Descriptions	Q'ty	No.	Descriptions	Q'ty
1	Table	1	41	Cylinder	2	(5)	Steel Ball $\Phi 8$	2
2	Up Link Assembly	1	42	Oil Seal Sets	8	(6)	Spring	1
3	Guide Roller	4	43	Oil Pipe Tie-in	4	(7)	Steel Ball $\Phi 10$	2
4	C-ring	4	44	Harden Oil Pipe	2	(8)	Spring	1
5	Hex Cap Bolt	4	45	Connect Seat	1	(9)	Spring Pin $\Phi 5 \times 16$	1
6	Link Seat	2	46	Safe Valve	1	(10)	Discharge Block	2
7	Flat Washer	4	47	Oil Pipe Tie-in	1	(11)	Hex Cap Screw	1
8	Spring Washer	4	48	High Pressure Oil Pipe	1	(12)	C-Ring $\Phi 7$	1
9	Hex Cap Nut	4	49	Hex Cap Bolt	2	(13)	Flat Washer	1
10	Hex Cap Bolt	2	50	Flat Washer	2	(14)	O-Ring	1
11	Spring Washer	2	51	Spring Washer	2	(15)	Air Breather	1
12	Big Washer	2	52	Hex Cap Nut	2	(16)	Top Rod	1
13	Up Link Assembly	1	53	Oil Box	1	(17)	Spring	1
14	Shaft	2	54	Hex Cap Bolt	1	(18)	Air Breather	1
15	Flat Washer	2	55	O-ring	1	(19)	Fix Screw Post	1
16	Spring Washer	2	56	Oil Pipe	1	(20)	Valve Block	1
17	Hex Cap Bolt	2	57	Frame Seat	1	(21)	Hex Cap Screw Post M6	1
18	Shaft Cover	4	58	Hex Cap Bolt	4	(22)	Washer	1
19	Down Link Assembly	1	59	Shaft Cover	4	(23)	Cylinder	1
20	Shaft	2	60	Cover	8	(24)	Fixed Block	1
21	Bushing	4	61	Wheel	4	(25)	Bushing	2
22	Flat Washer	4	62	Hex Cap Nut	4	(26)	Spring Pin $\Phi 6 \times 40$	1
23	Spring Washer	4	63	Semicircle Screw	2	(27)	Spring	1
24	Hex Cap Bolt	4	64	Spring Washer	2	(28)	UHS25 Oil Seal	1
25	C-ring	2	65	Flat Washer	2	(29)	DH25 Dust Cover	1
26	Shaft	2	66	Protect Cover	2	(30)	Lift Piston	1
27	Down Link Assembly	1	67	Flat Washer	8	(31)	Flat Washer	2
28	Link Seat	2	68	Spring Washer	8	(32)	Shaft(1)	1
29	Hex Cap Bolt	2	69	Hex Cap Bolt	8	(33)	Shaft(2)	1
30	Fixing Seat	2	70	Swivel Wheel Holder	2	(34)	Joint Block	1
31	Flat Washer	2	71	Handle	1	(35)	Spring	1
32	Spring Washer	2	72	Hex Cap Bolt	4	(36)	Screw Post	1
33	Hex Cap Nut	2	73	Flat Washer	4	(37)	Flat Washer	1
34	Spring Pin	2	74	Spring Washer	4	(38)	Block	1
35	Lift Piston	2	75	Hex Cap Nut	4	(39)	Pressure Block	1
36	Dust Cover	2				(40)	Pressure Guide	1
37	O-ring	2	(1)	Air Breather M14 \times 1.5	4	(41)	Lock Pin	1
38	Oil Seal	2	(2)	O-Ring $\Phi 16 \times 2.4$	5	(42)	Shaft(3)	1
39	Top Nut	2	(3)	Lowering Valve	1	(43)	Shaft(4)	1
40	O-ring	2	(4)	Spring	1	(44)	Foot Pedal	1