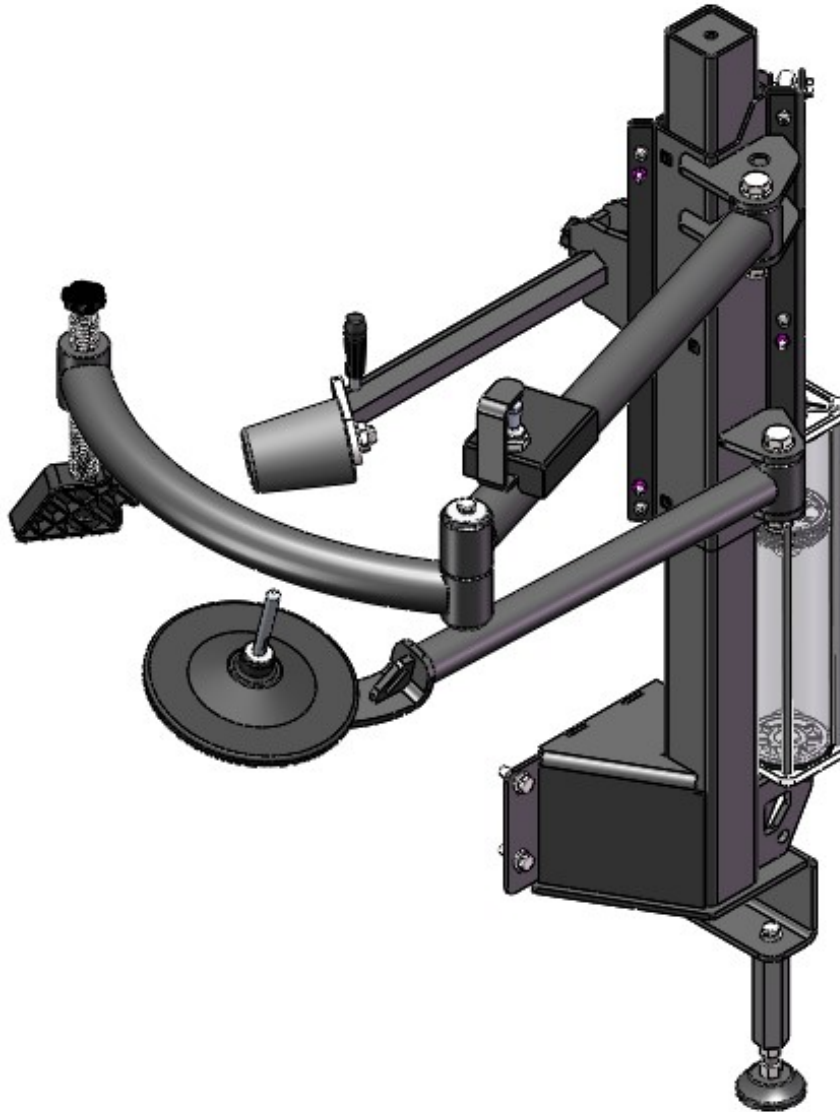


# RIGHT ASSISTANT ARM

CF-R



INSTRUCTION

# CONTENTS

<b>1 Summarize</b> .....	<b>2</b>
1.1 Usage.....	2
1.2 TECHNICAL DATA.....	2
1.3 Safety notes.....	2
<b>2 Product Structure</b> .....	<b>2</b>
<b>3 Installation and setup</b> .....	<b>3</b>
3.1 Installation.....	3
3.2 Transportation.....	3
3.3 Unpack.....	3
3.4 Spatial size.....	3
3.5 Assembly.....	3
3.6 Setup.....	6
<b>4 Operation</b> .....	<b>6</b>
4.1 Fix the tyre .....	6
4.2 Remove the tyre.....	6
4.3 Fit on the tyre.....	8
<b>5 Spare Parts List</b> .....	<b>10</b>
<b>6 Breakdown Drawing</b> .....	<b>11</b>
<b>Accessories 1: Gas circuit principle diagram</b> .....	<b>12</b>

## 1、 Summarize

### 1.1 Usage

The assistant arm was a mechanism which assist the tyre changer to working. It will make the operation easy and efficient, especially for high aspect ratio rate tyres.

Please read this manual carefully before use. The manufacturer will not responsible for any loss cause by not operating properly according to this manual.

Please keep this manual as a operation guidance at the side of the machine.

### 1.2 Technical data

Working pressure: 8~10bar;

Net weight: 80kg;

### 1.3 Safety notes

- The machine must be operated by the trained person.
- Please combine this equipment to tyre changer which produced by our company. We do not guarantee this equipment can be used with other type of tyre changer.
- We will not responsible for any change on this equipment without manufacturer's authorization.
- Please be familiar with the up&down switch before operation in order to use this equipment skillfully.
- Keep your hand far away from the roller, block and tray in operation.
- Make sure the rim been firmly locked on the working plate before operation, or the tyre may be damaged during operating.

## 2、 Product Structure

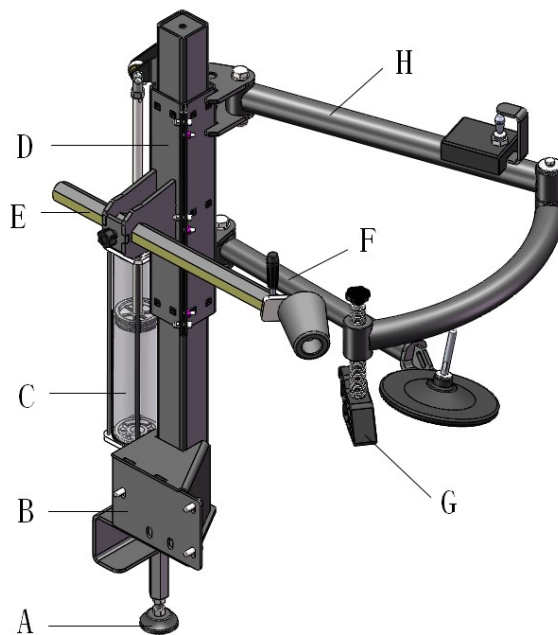


Fig. 1

Product structure as in Fig. 1

No.	Name	No.	Name
A	Support base	E	Press tyre Mechanism
B	Main support	F	Hold tyre Mechanism
C	Up & down Cylinder	G	Adjustable block
D	Slide mechanism	H	Moveable arm

### 3、 Installation and setup

#### 3.1 Installation

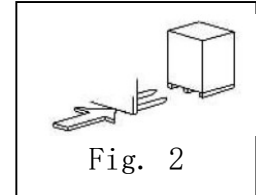
##### ATTENTION!

- This equipment must be installed by trained person.
- Make sure stop the air and electric power before installation.



#### 3.2 Transport

Please move the packed machines with the forklift ,according to the position shown in Fig. 2



#### 3.3 Unpack

This equipment can be packed together with the tyre changer or separately. Please check the equipment after removing all the packing material; if in doubt, do not use the machine and Contact dealer promptly

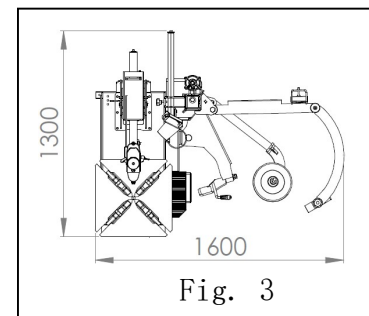
Please put all the packing material together and deal with according to local regulation, including plastic material, polystyrene, nails, screws, wooden material and carton etc.

Please also check all the separate parts in the box according to the packing list.

Attention: To avoid any hurt, please wear gloves when you unpacking the machine.

#### 3.4 Spatial size

Please install the machine in proper space indoor following the biggest size in Fig. 3. Please install the machine in proper space indoor following the biggest size in attached picture.



#### 3.5 Assembly

##### 3.5.1 Connect the support base

Put the support base B into the bottom of assistant arm A as in Fig.4, then fixed with screw C and tighten it.

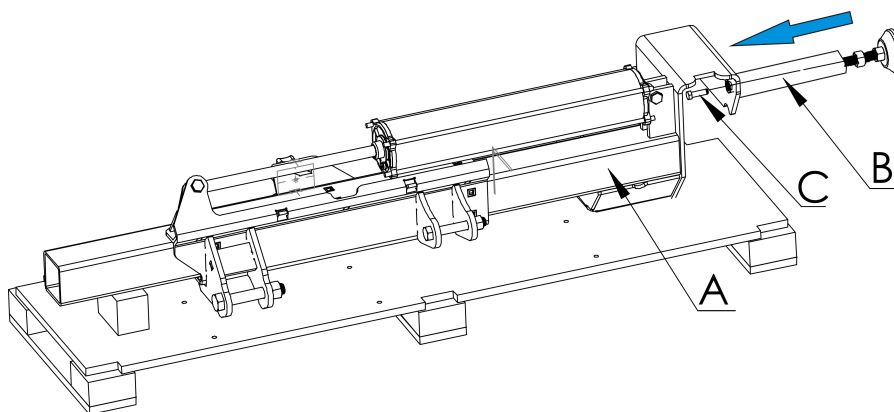


Fig. 4

##### 3.5.2 Fitting with the tyre changer

- Turn off the gas and electric of the tyre changer.
- Place the assistant arm A on the left platform of the chassis M. First screw the bolt F (M12\*35)down into the mounting holes together with the washer E and D. And screw the

bolt G(M12\*35) horizontal into the mounting holes together with the washer H and I.  
Then tighten all the 6 screws.(Fig. 5)

- Adjust the screw K to make the support base on the ground and tighten.(Fig. 5)

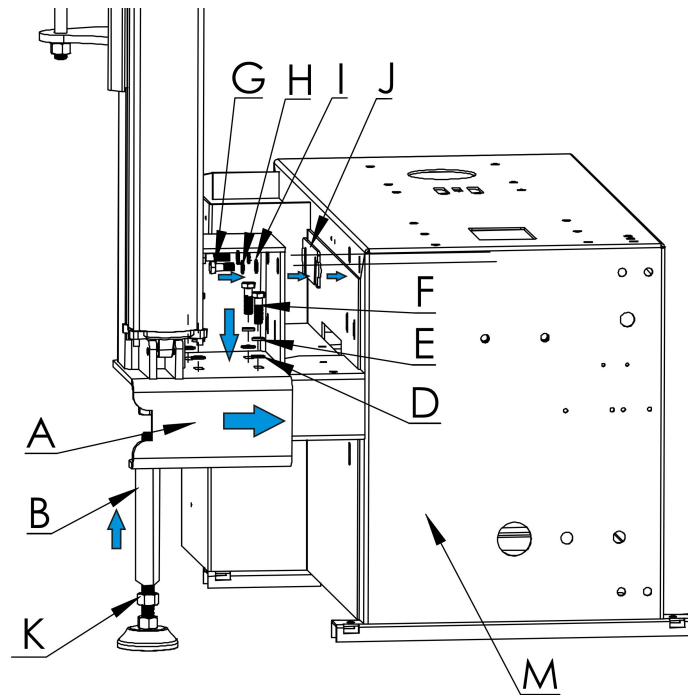


Fig. 5

### 3.5.3 Component assembly.

- As in Fig.6, install the B, C, D, E in sequence use the screws and washers.

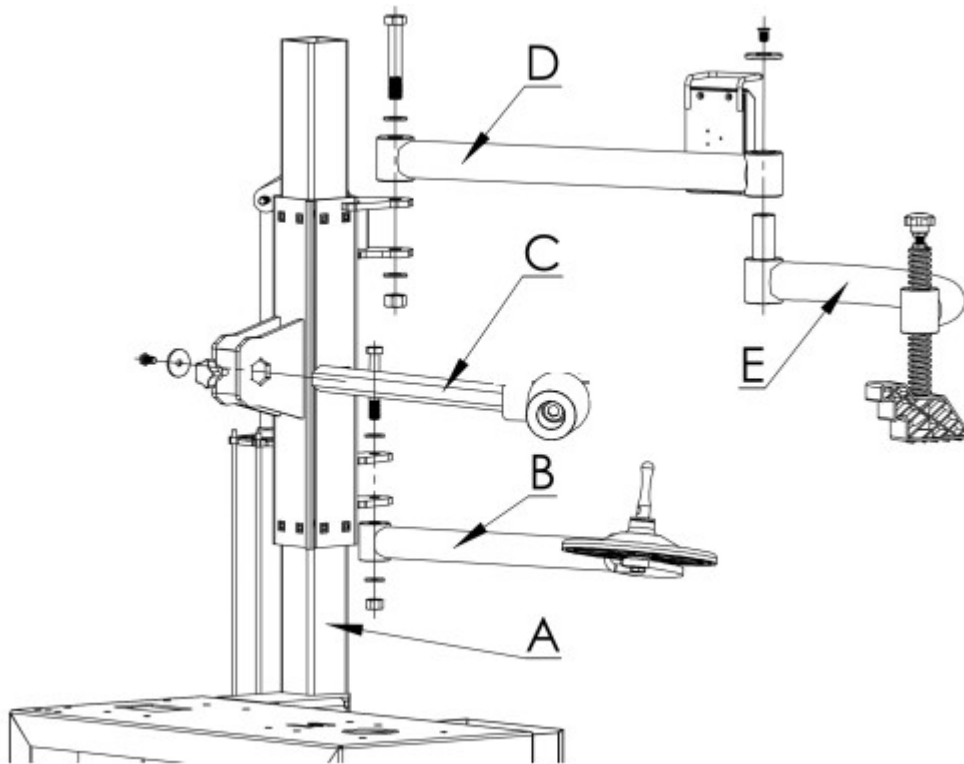


Fig. 6

### 3.5.4 Air hose connection

- Connect the connector on the Q into Z at the back of chassis(Fig.7). (Please remove the cap if these is any) .

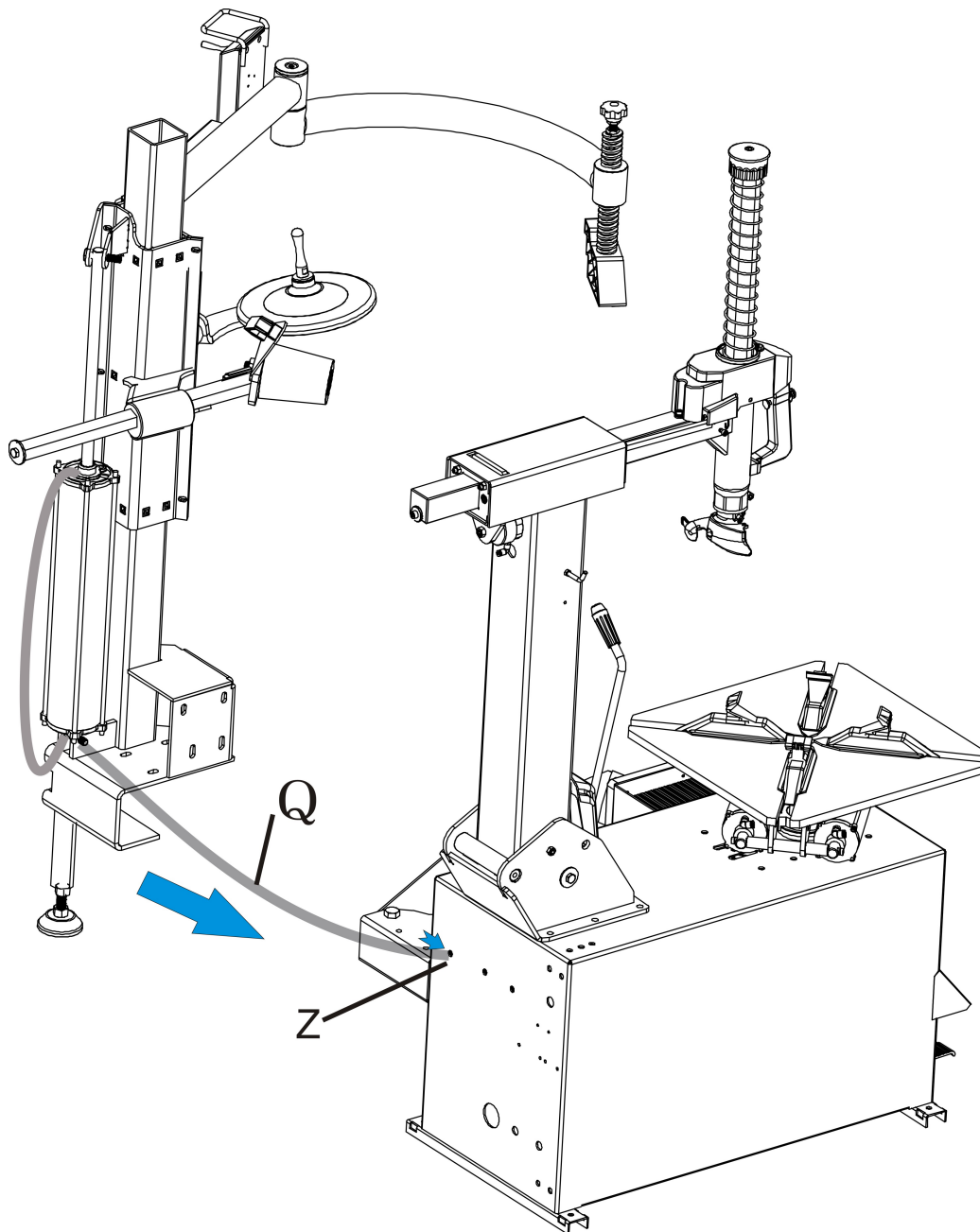


Fig. 7

### 3.6 Setup

- Turn on the electric power and connect the air compressor, check if all the components working well. Working pressure between 8~10bar.
- Safety Warning Label

#### WARNING:

- Please update the warning signs once they are missing or stained !
- Do not use this equipment when the warning signs missing
- Do not cover the warning labels.
- Please place the warning sign (as on the right) to anywhere if necessary.

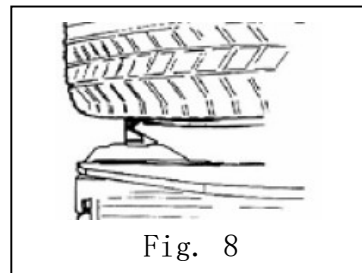


### 4. Operation

Tyre changer was a difficult work and the assistant arm will make it much easier.

#### 4.1 Fix the tyre

- According to the operation manual, first deflate the tyre and apart the bead, then lock the rim as in Fig. 8.
- External rim clamping: make the wedges apart with the pedal B, place the wheel and locked it from outside.

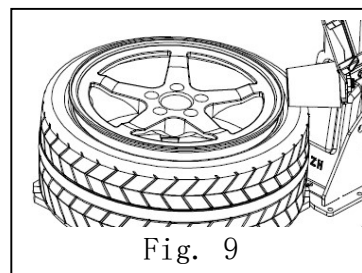


**⚠️ Note: We suggested to choose External rim clamping when use the assistant arm. It's not safe to choose internal rim clamping (the rim may get out from the clamp in operating and hurt the operator etc).**

#### 4.2 Remove the tyre.

1) Lock the tyre on the working plate and apart the bead again if necessary (Fig. 9).

- Place the roller upon the tyre, do not touch the rim.
- Turn down the roller and make it press the tyre (Fig. 9)



**⚠️ Note: Lubricate the tyre before operating.**

2) Remove the upper bead.

- Place the mounting head A and roller C in position (use switch D to up/down the roller), insert the crowbar B (Fig. 10)
- Raise the assistant arm and pull back the Roller C. Turn the arm E and put the block against the tyre on the other side of the mounting head. Press the switch D and turn it down, then pull the crowbar and make the bead upon the mounting head. (Fig. 11)
- Raise the assistant arm again and move away the block.
- Press the pedal Z to turn the working plate until the upper bead apart from the rim. (Fig. 11)

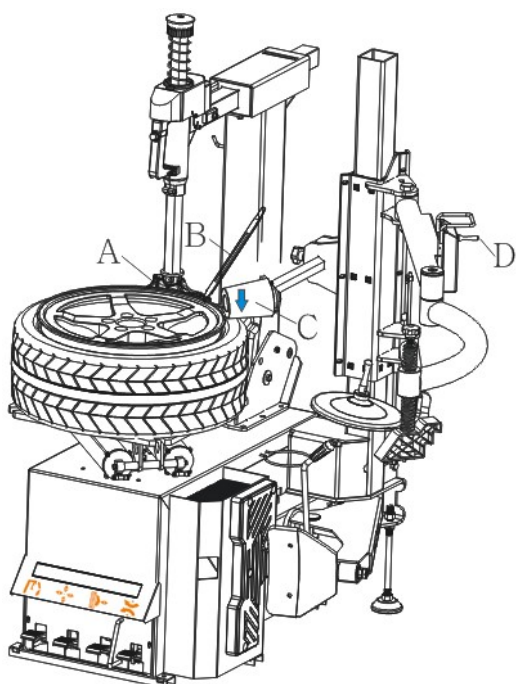


Fig. 10

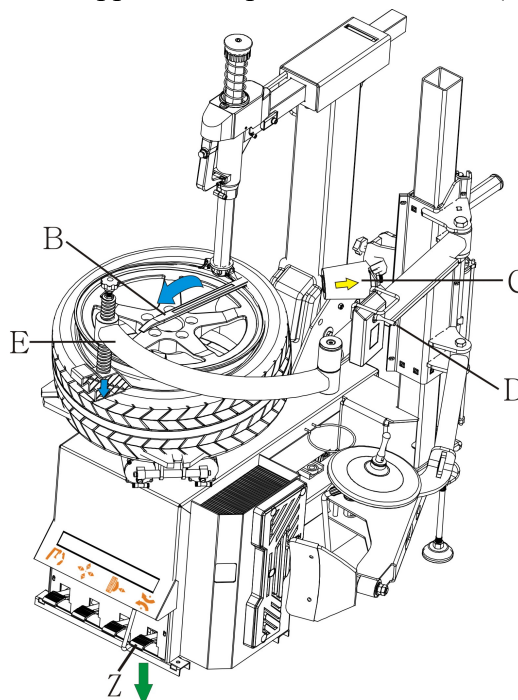


Fig. 11

3) Remove the under bead.

- Turn the arm and move the tray F hold the tyre from bottom, do not touch the Rim (Fig. 12).
- Make sure the the tray hold the tyre firmly, use the crowbar H to assist if necessary, press the pedal Z and turn the working plate, raise the arm with switch D until the under tyre bead apart from the rim. (Fig. 12)

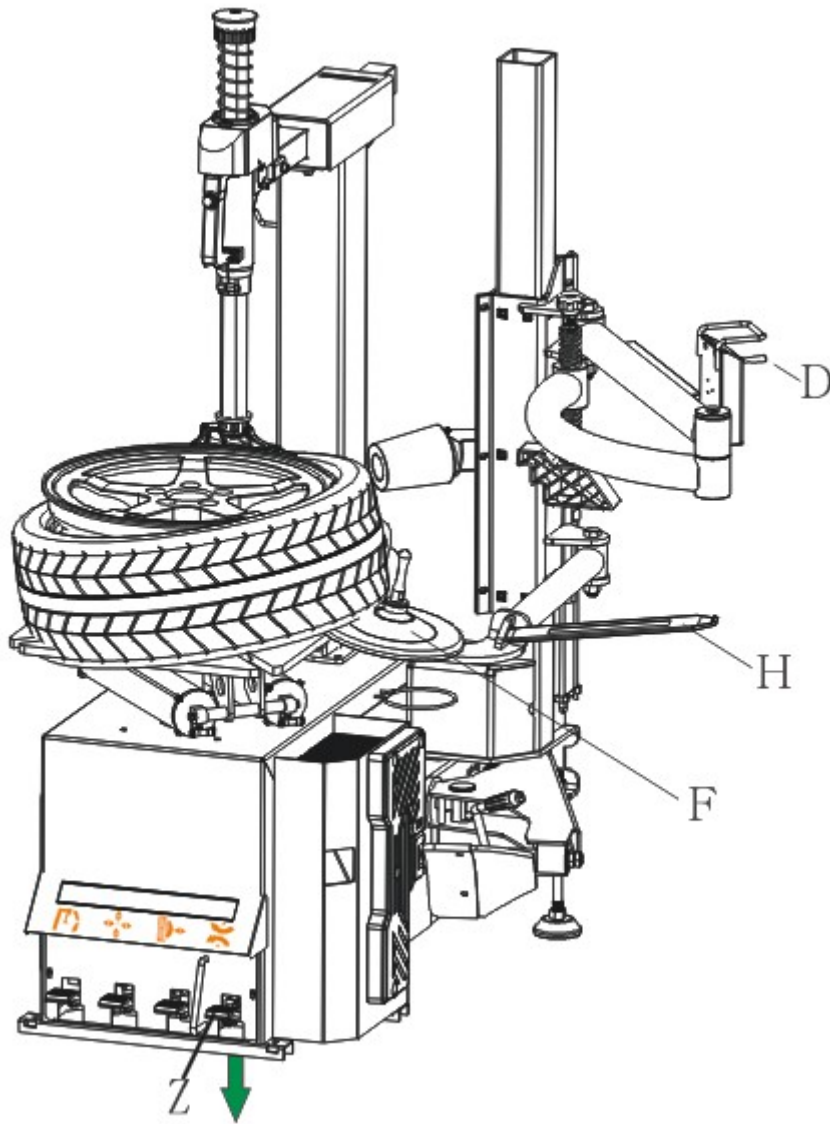


Fig. 12

#### 4.3 Fit on the tyre

- Place the tyre on the rim after lubricating the bead, move the mounting head on the rim edge, press the pedal and turn the plate until the under bead fit on the rim.
- Raise the assistant arm use the switch D, move the roller C upon the tyre, turn the arm E to make the block at the position as in Fig.13. Turn down the arm and make the tyre bead under the mounting head with the roller C, in the meanwhile adjust the arm E and press the tyre bead into rim with the block, in order to reduce abrasion(Fig. 13)

**⚠️Note: Do not let the block press the rim during the operating, which may cause danger.**

- Press the pedal Z and turn the working plate, the block also followed the rotation accordingly, until fit on the upper bead with the help of mounting head.(Fig. 13)

**⚠️Note:** In case that stuck during the operating, please stop immediately to avoid any damage on the tyre. It is necessary to “raise”(move upwards) the inverter pedal(Z) making the chuck rotate in an anti-clockwise direction. Readjust the place of the roller and block, operate again according to the way in Fig. 13.

**⚠️Note: Keep irrelevant people far away from the machine during operation.**



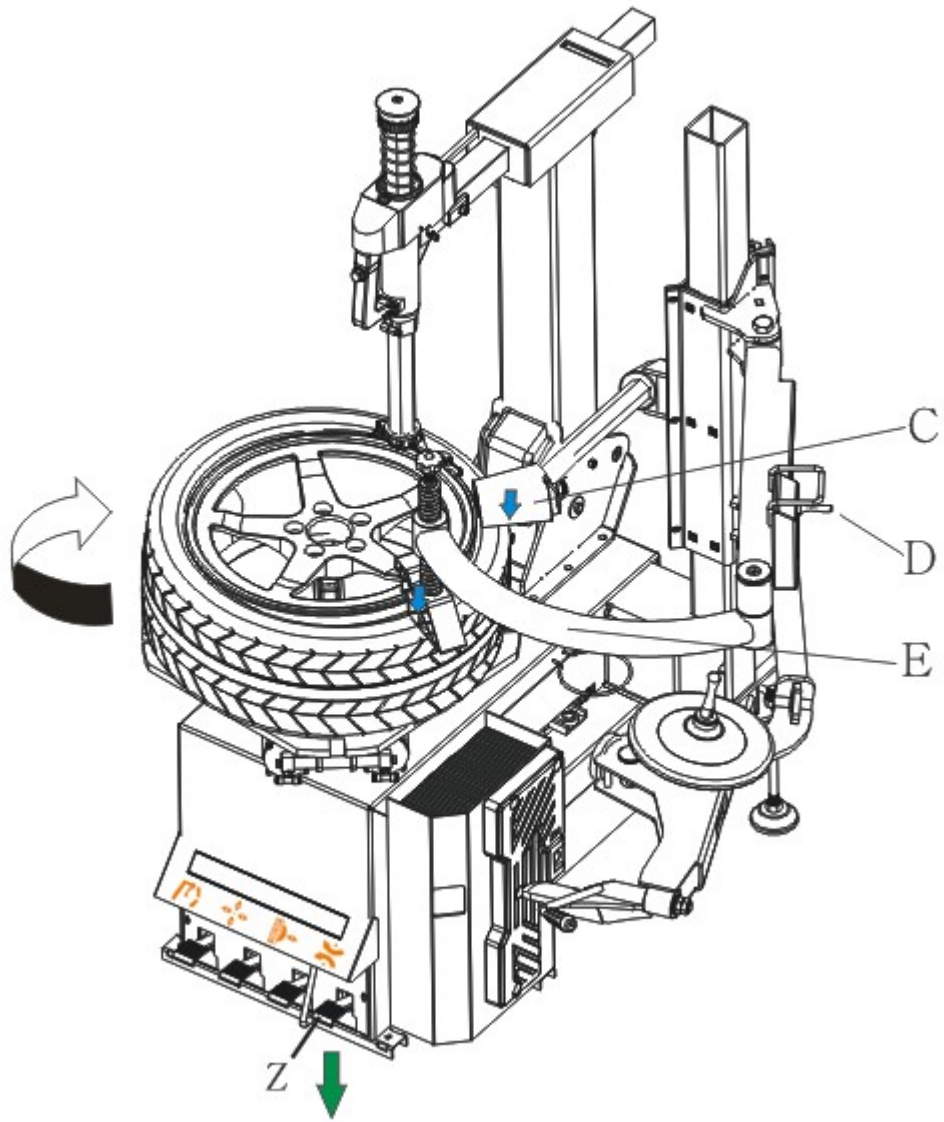


Fig. 13

## 5. Spare Parts List

This detailed statement is only to provide the reference for repair and maintenance personal.

If the equipment parts damaged, please purchase them according to code in this statement from the dealer or manufacturer.

No.	Name	Qty	No.	Name	Qty
R801	Column assembly	1	R849	Spring washer 12	8
R802	Left sliding assembly	1	R850	Washer 12	10
R803	Right sliding assembly	1	R852	Support rod	1
R804	Handle M12*25	1	R853	Screw M12	2
R805	Screw M8*30	6	R854	Support foot	1
R806	sliding panel wear plate	10	R855	Lock nut M12	2
R807	Lock nut M8	6	R857	Screw M12*70	2
R808	Straight arm assembly	1	R858	Screw M16*80	1
R809	Pin rod M20*120	1	R860	Complete Cylinder	1
R810	Washer 20	4	861	Piston rod	1
R811	Luck nut M20	2	862	Front cover on cylinder.	1
R812	Hand valve assembly	1	863	O-seal 82*2.6	2
R813	Box cap	1	864	Bronze belt	2
R814	Connector M16	1	865	Y-seal 20*36*8	1
R815	Screw M8*25	6	866	Seal cover	1
R816	Handle M12	1	867	Cylinder piston	1
R817	Nut M8	6	868	Washer 12	1
R818	Bent arm assembly	1	869	Lock nut M12	1
R819	Adjustable screw rod	1	870	Cylinder bolt	4
R820	Block(Trapezoid)	1	871	Cylinder barrel	1
R821	Washer 10*2.5	1	872	Cylinder rear cover	1
R822	Screw M10*25	1	873	Lock nut M12	8
R823	Screw M12*30	2	874	Angle coupling IPL 6-01	2
R824	Pin	1			
R825	Holder assembly	1			
R826	Washer	2			
R829	Handle	1			
R830	Washer	1			
R831	Tray	1			
R832	Pin rod	1			
R834	Screw M10*30	1			
R835	Lever assembly	1			
R838	Thin nut M20	1			
R839	Screw M8*30	1			
R843	Tyre Roller	1			
R844	Washer 20	2			
R845	Screw M20*95	1			
R847	Screw M8*10	1			
R848	Screw M12*35	6			

# 6. Breakdown Drawing

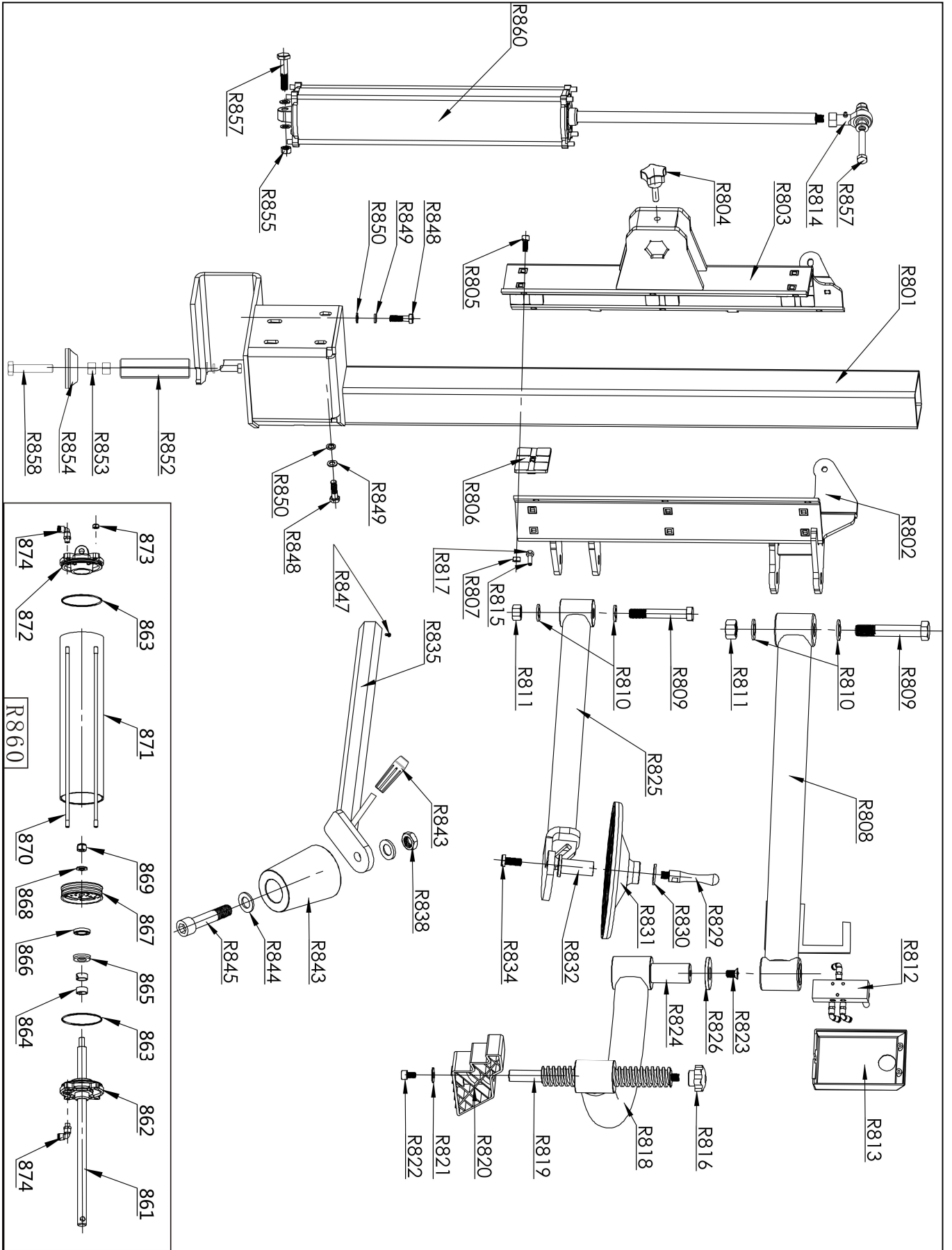


Fig. 14

Accessories 1. : Gas circuit principle diagram

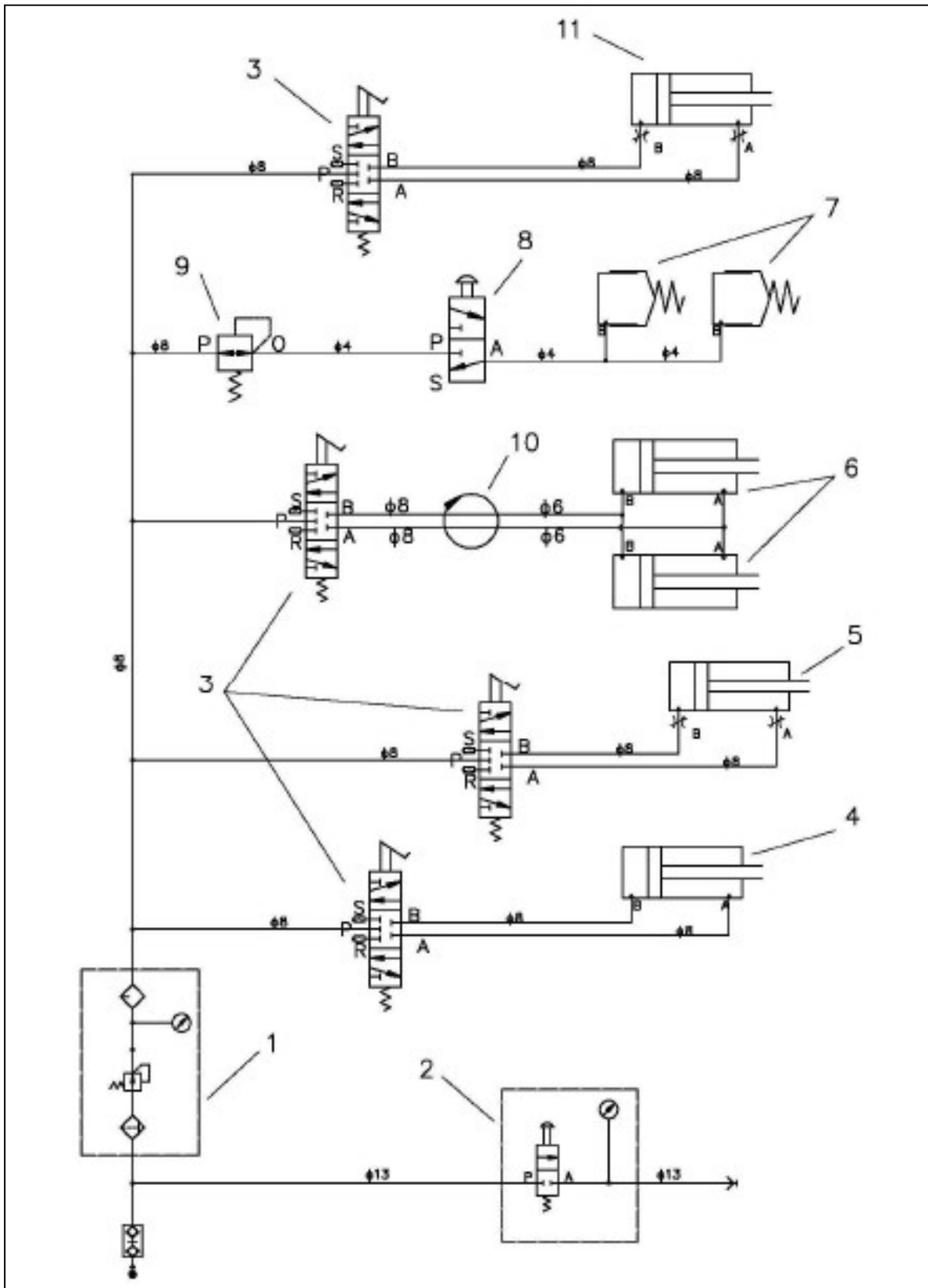


Fig. 15