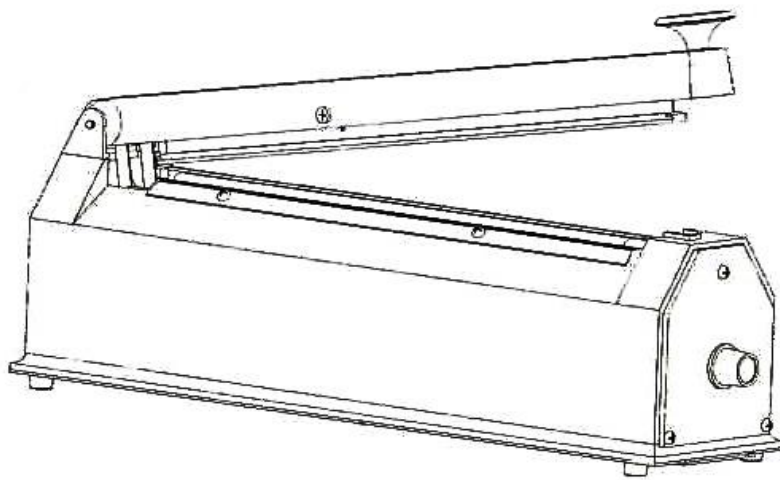


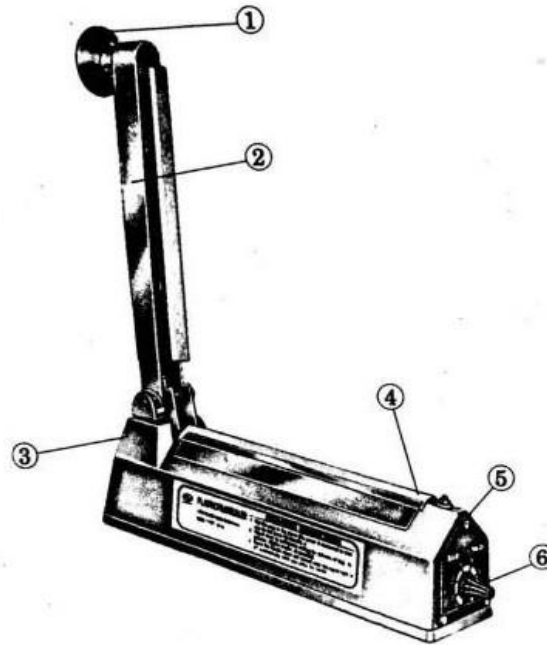
Hand-Operated Impulse Heat Poly Bag Sealer

Operation Manual



Note: Be sure to read *Operation Manual* before the first use.

The hand-operated impulse heat poly bag sealers are inexpensive and portable machines used to seal Plastic bags, polypropylene (poly bags), bubble bags, PVC, polyester, poly/cello films, humidity-proof cellophane film, aluminum foil bag, PO-film-coated EPE foam bag and teabag. They are used to seal products such as medical pouches, food and beverage products, gift items and office supplies.



①Handle; ②Press Arm; ③Housing Case; ④Heat Tape;
⑤Indicator Light; ⑥Timer Knob

1. Technical Details

Model	KS-200P	KS-200I	KS-200A	KS-300P	KS-300I	KS-300A
Shell Material	Plastic	Iron	Aluminum	Plastic	Iron	Aluminum
Sealing Length	8" (200mm)			12" (300mm)		
Sealing Width	5/64" (2mm)					
Max. Sealing Thickness	12mil (0.3mm)					
Heating Time	0.2-1.5 s					
Power	0.42 HP (310 Watts)			0.53 HP (400 Watts)		
Voltage	115V±10%, 60Hz					

2. Operation method

Just connect the power cable to the socket and adjust the heating time according to thickness of the material. Put the plastic bag on then press the handle, the led indicator light will be on, the machine will control the heating time itself. When the LED indicator light is off, the power will be automatically disconnected. Release the handle after 1-2 seconds, then the sealing is finished.

The LED indicator Light is on only when the machine is sealing, it's not on if you just connect it to socket.

If damage appears when it's sealing, that's because the heating time is too long, then shorten the heating time by rotating the timer knob with anticlockwise rotation.

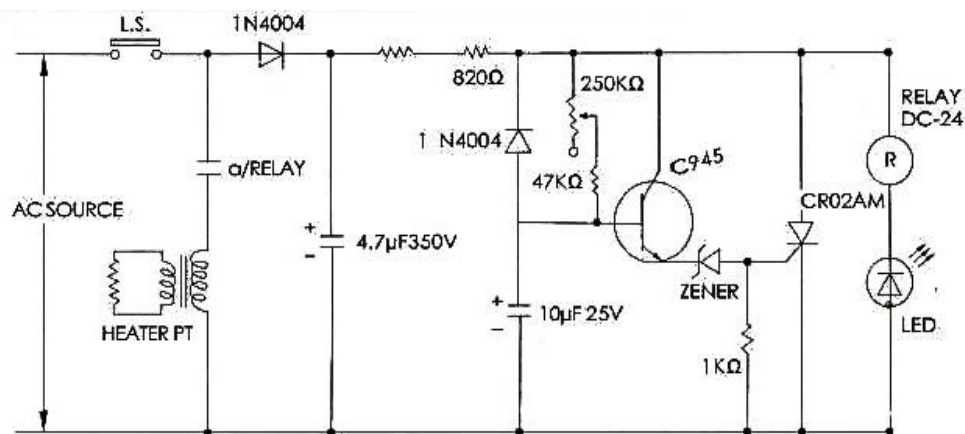
If Insecure sealing appears, that's because the heating time is too short, then extend the heating time by rotating the timer knob with clockwise rotation

If the plastic bag is sticky to machine, that's because the cooling time is not long enough. Please extend the cooling time after the LED light is off, hold longer time to release the handle.

If heating time is adjusted, don't do any change when it's sealing or continuous sealing.

You can always connect the power cable to the socket, because if it's not sealing, it won't have any electricity consumption.

3. Electrical schematics



4. Packing List

- 1 × Impulse hand-operated bag sealer
- 1 (or 2) × Extra sealing elements
- 1 (or 2) × Extra teflon sheets
- 1 × Operation manual