

Owner's Manual & Safety Instructions

500 LB. Hydraulic Lift Table



⚠ WARNING

Read this material before using this product.
Failure to do so can result in serious injury.
SAVE THIS MANUAL.

Specifications

Capacity	500 lb
Lift Range	9-1/4" – 28-1/2"
Table Size	27-3/4" x 17-3/4"

Important Safety Information

Assembly Precautions

1. Wear ANSI-approved safety goggles and heavy-duty work gloves during assembly and use.
2. Keep assembly area clean and well lit.
3. Assemble only according to these instructions. Improper assembly can create hazards.
4. Keep bystanders out of the area during assembly.
5. Do not assemble when tired or when under the influence of drugs or medication.

Use Precautions

1. Do not exceed 500 lb max weight capacity. Be aware of dynamic loading! Sudden load movement may briefly create excess load causing product failure.
2. Use only on flat, level and hard surface capable of supporting the Lift Table and any item(s) placed on Table. Evenly distribute load on Table to avoid tipping.
3. Use as intended only. Do not use Lift Table to lift or transport people.
4. Follow all hydraulic bleeding instructions specified in this manual.
5. This product is not a toy. Do not allow children to play with or near this item.
6. Use as intended only.
7. Do not adjust Safety Valve.
8. Keep clear of load while lifting and lowering.
9. Lower load slowly.
10. Do not use for aircraft purposes.
11. Inspect before every use; do not use if parts are loose or damaged.
12. Maintain product labels and nameplates. These carry important safety information.

Operating Instructions



Read the **ENTIRE IMPORTANT SAFETY INFORMATION** section at the beginning of this manual including all text under subheadings therein before set up or use of this product.

1. Lock the back Casters to prevent the Lift Table from moving.
2. Raise the Lift Table by pumping the Pump Lever.
3. Once the desired height is reached, engage the Safety Bars on sides of the Lift Frame by swinging them back towards the handle. Lower the table slightly and make sure the bars lock in place. See Figure A. This helps prevent uncontrolled Lift Table drop.

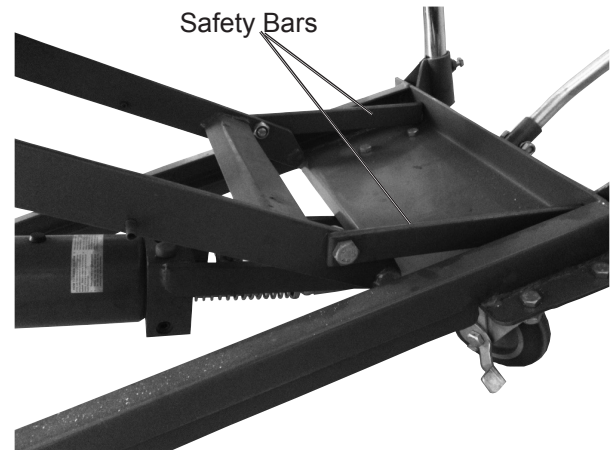


Figure A

4. To lower the Lift Table, pump the table up until the Safety Bars can be disengaged.
5. Swing the Safety Bars up away from the Handle, towards their original position.
6. Squeeze the Control Lever (33) to slowly lower the Lift Table.

Maintenance



Procedures not specifically explained in this manual must be performed only by a qualified technician.

WARNING

TO PREVENT SERIOUS INJURY FROM TOOL FAILURE:

Do not use damaged equipment. If abnormal noise or vibration occurs, have the problem corrected before further use.

Cleaning, Maintenance, and Lubrication

1. **BEFORE EACH USE**, inspect the general condition of the tool. Check for:
 - loose hardware,
 - misalignment or binding of moving parts,
 - caster brake function,
 - hydraulic fluid leakage (hydraulic components not user-serviceable)
 - cracked or broken parts, and
 - any other condition that may affect its safe operation.
2. **AFTER USE**, wipe external surfaces of the tool with clean cloth.
3. If the Control Lever Does not lower the Lift Table easily, adjust the Pull Rod (32).

WARNING! Press the Control Lever only halfway down during adjustment. This will allow the Lift Table to lower slowly for safety purposes.

 - a. With assistance, tip over Table Cart.
 - b. Loosen the Bolt (35) and Nut (25) and adjust the Pull Rod until it is tight.
 - c. Re-fasten the Nut and Bolt. Then test the Control Lever, making sure it is pressed halfway down.

Bleeding Instructions

If the Lift Table is not performing properly, it may be due to air in the hydraulic system. Follow these steps to bleed air from the system.

1. Raise the Lift Table to its highest position.
2. Swing down the two Safety Bars so that they both rest on the top platform of the Base Assembly.
3. Carefully remove the rubber Fluid Plug (4a).
4. After the Fluid Plug is removed, swing the two Safety Bars back against their stops.
5. Squeeze the Control Lever to lower the Lift Table. This should purge the air out of the hydraulic system.
6. Raise the Lift Table to its highest position and swing both Safety Bars down onto the Base Assembly (17).
7. Fill the Fluid Tank (5a) with new Hydraulic Fluid (not included).
8. Replace the Fluid Plug by firmly pressing it into the fluid hole while twisting it.

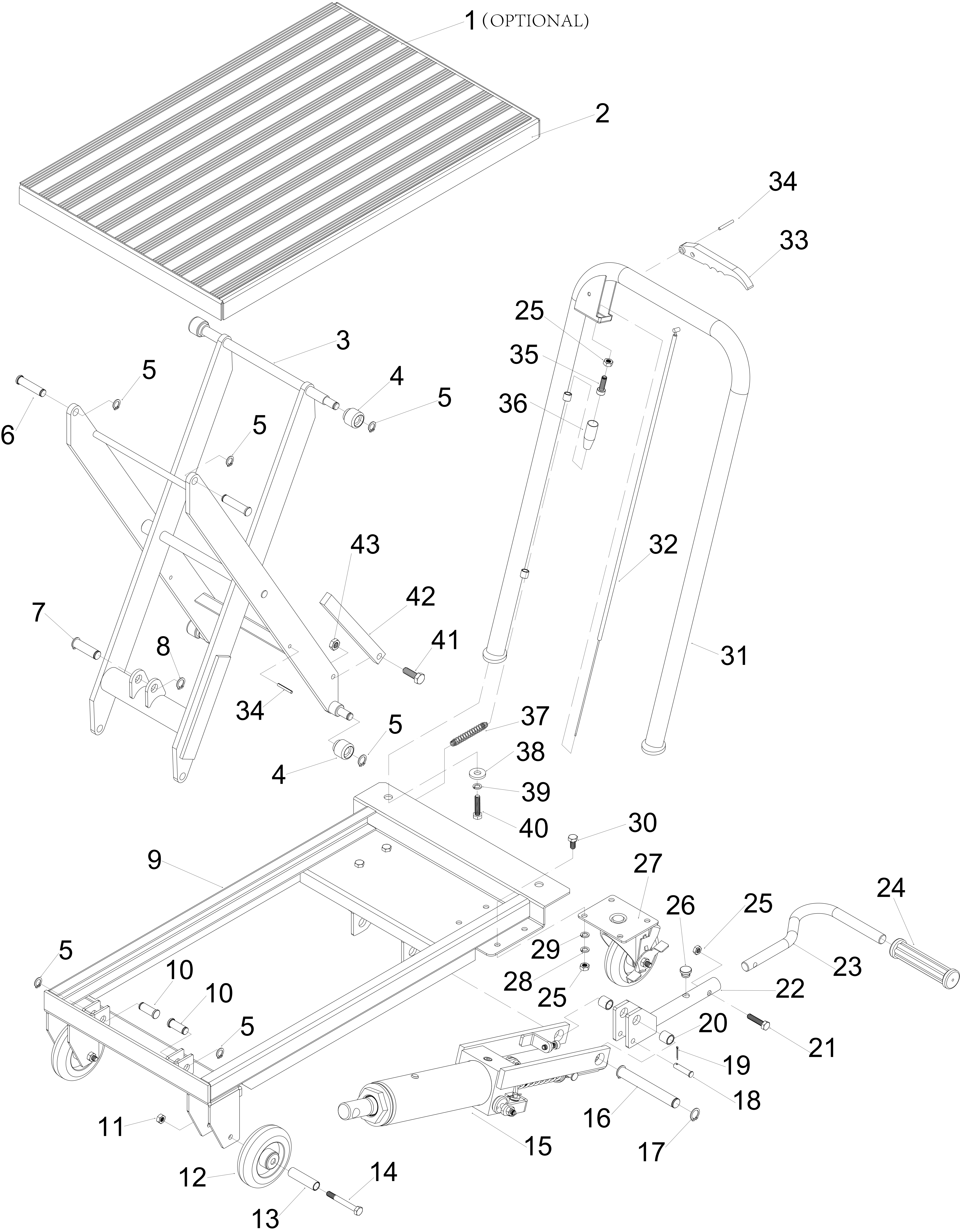
Parts Lists and Diagrams

Main Parts List

Part	Description	Qty
1	PROTECTIVE MAT	1
2	TABLE	1
3	SCISSOR ARM	1
4	ROLLER	4
5	RETAINING RING 12	8
6	PIN	2
7	PIN	1
8	RETAINING RING 14	2
9	BASE	1
10	PIN	2
11	LOCK NUT M8	2
12	WHEEL 4"	2
13	BUSHER	2
14	HEX BOLT M8x60	2
15	POWER UNIT	1
16	PIN	1
17	RETAINING RING 16	2
18	PIN 8x40	1
19	COTTER PIN 2.5x24	1
20	BUSHER	2
21	HEX BOLT M8x35	3
22	CONNECTING ROD	1

Part	Description	Qty
23	PUMP LEVER	1
24	FOOT PEDAL	1
25	HEX NUT M8	10
26	RUBBER PAD	1
27	LOCKING SWIVEL CASTER 4"	2
28	SPRING WASHER 8	8
29	WASHER 8	8
30	HEX BOLT M8x16	8
31	HANDLE	1
32	PULL ROD	1
33	CONTROL LEVER	1
34	ROLL PIN 6x26	3
35	BOLT M8x25	1
36	JACKET	1
37	SPRING	1
38	WASHER 12x35x6t	2
39	SPRING WASHER 12	2
40	HEX BOLT M12x40	2
41	HEX BOLT M10x30	2
42	SAFETY BAR	2
43	HEX NUT M10	2

Main Assembly Diagram



Parts List A - Ram

Part	Description	Qty
1a	O-Ring	1
2a	Top Nut	1
3a	Sealing Gasket	1
4a	Filler Rubber Plug	1
5a	Fluid Tank	1
6a	T-Ring	1
7a	Cylinder	1
8a	Copper Washer	1
9a	Ram	1
10a	O-Ring Retainer	1
11a	O-Ring	1
12a	Base	1
13a	Spring	1
14a	Release Valve	1
15a	Seal Washer 20	2
16a	Axle Sleeve	1
17a	O-Ring	2
18a	Screw M8x20	1
19a	Nut M8	3
20a	Cotter Pin 2.5X24	2
21a	Pin	1
22a	Release Valve Link	1
23a	Washer 8	2

Part	Description	Qty
24a	Bolt M8x25	1
25a	Seal Washer	1
26a	Pump Cylinder	1
27a	U-Cup	1
28a	O-Ring	2
29a	Retainer Ring	1
30a	Pump Piston	1
31a	Linkage	1
32a	Pin 8X24	1
33a	Spring Cap	1
34a	Spring	1
35a	Bolt M8x25	1
36a	Plug	1
37a	Spring	1
38a	Pumping Valve Spindle	1
39a	Pumping Valve Seat	1
40a	Steel Ball 6.35	1
41a	Steel Ball 5	1
42a	Ball Seat	1
43a	Spring	1
44a	O-Ring	1
45a	Adjusting Bolt	1

Assembly Diagram A - Ram

