

Instruction Manual

Air Cushion Machine AT-100

1. Equipment technical parameters

Power supply voltage /frequency	110-220V/,50-60Hz
Power	200W
Working speed	12m/min
Material axis diameter	50.8mm
Applicable inflation port size	18mm—20mm
Outline dimension	L480mm*W290mm*H360mm
Total weight of machine	5.5 kg

2. General Appearance of Machine

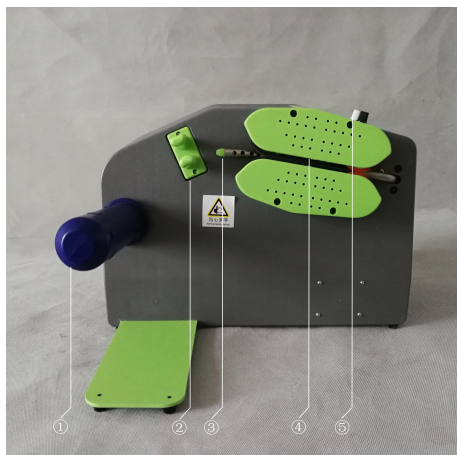


3. Accessory of the machine



- ① A box of blades
- ② 2 pieces of Inner Hexagon Spanner
- ③ 2 pieces of Teflon Heating Belts
- ④ 1 piece of power cord

4. Mechanical Structure of Equipment



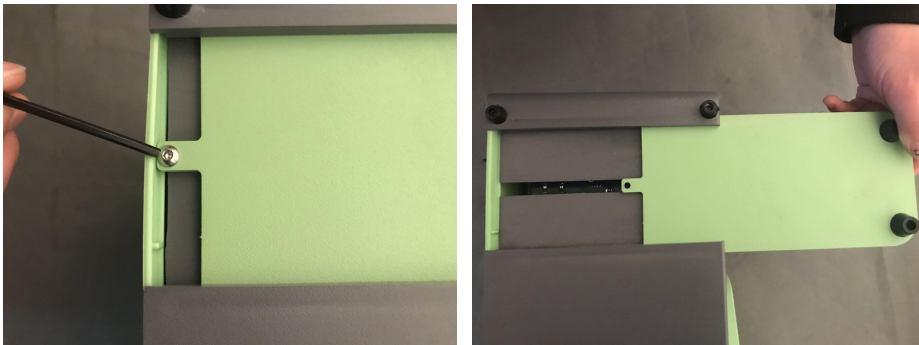
- ① The Film Roll Holder
- ② Guide Shaft
- ③ Inflatable nozzle
- ④ Heating Sealing Assembly
- ⑤ Control Panel

5. Operation Guide

**Step 1: Insert a six angle screwdriver into a small hole above the scroll.
The reel is rotated clockwise to the machine.**



**Step 2: Screw the six screwdriver unscrewed at the bottom of the machine.
And pull out the support foot of the machine.**



Step 3: Connect the power and switch the power on.

Load the film roll on the holder, the film charging port should be on air pipe side.

Put air channel into the air pipe. Press the “Red button”, and pull the film slightly at the same time.







Step 4: Press the “Green Button”,once finished warming up it works automatically.



6. Parameter Setting

The following set parameters chart is for reference

Film roll type	Picture	Temperature setting	Speed setting	Air volume setting
1. 20*10cm,20mic		150-170 grade	8 grade	3 grade
2. 40*28.5cm,20mic		150-170 grade	10 grade	10 grade
3. 40*32cm,20mic		150-170 grade	10 grade	10 grade
4. 58*40cm,20mic		150-170 grade	9 grade	10 grade

Note: The setting method of 3 parameters

A. Temperature setting: Press the - + at the same time, When the temperature numbers flashing, then you can press - or + to set the temperature.

B. Speed setting: Revolving Left (red) knob. From 1-10.

C. Air volume setting: Revolving Right (blue) knob. From 1-10.