



# 申行健 SUCCESS ENGINE® 水润滑压缩机 真空泵

WATER LUBRICATED COMPRESSOR VACUUM PUMP



突出差异      创造玄机  
Stress difference      Create advantage



上海申行健压缩机有限公司  
SHANGHAI SUCCESS ENGINE COMPRESSOR CO.,LTD

工厂地址 Factory:

上海市松江区泖港工业区新波路666号  
No.666 Xinbo Road, Maogang Industry Zone, Songjiang Shanghai  
电邮(E-mail): sec@cnsec66.com sales@cnsec66.com  
网址(Website): http://www.cnsec66.com 邮编(P.C.): 201606

商务中心 Business Center:

上海市芷江西路788号华舟大厦23层 邮编(P.C.): 200070  
23/F Huazhou Building, No.788 West Zhijiang Road, Shanghai  
电话(Tel): 021-51098080 56559911 传真(Fax): 021-56550099



全国免费热线: 400 820 1006

www.cnsec66.com

SUCCESS ENGINE 注册商标 2018 A/1



心随行健 知行合一

立足申城，行健全球！



坐落于松江区泖港镇万亩涵养林边的上海申行健压缩机有限公司生产基地，四周环水，庄重典雅，内蕴丰富而不俗。她以“突出差异，创造玄机”的崇高理念为准绳，修炼升级，自强不息！缔造空压机精品源源不断……

“申行健”以SUCCESS ENGINE（成功动力）的英文谐音译名而成，寓意蕴含中国古代《周易》文化精神“天行健，君子以自强不息”之信念；表明立足申城，行健全球之决心；这就是“申行健”中文字义与英文谐音完美组合的理念精髓。

## SUCCESS ENGINE

Shanghai Success Engine Compressor Co., Ltd, the production base is located in Maogang Town, Songjiang District, Shanghai City, it is surrounded by conservation forest, with very beautiful environment and profound cultural background. The name of "SUCCESS ENGINE" was coming from "The Book of Changes"- "As Heaven's movement is ever vigorous, so must a gentleman ceaselessly strive along", under this faith, we are dedicated to manufacture the first-class brand compressor to the world.





# 心随行健 共创未来

—— 打造行业一流品牌  
Build industry-leading brand!

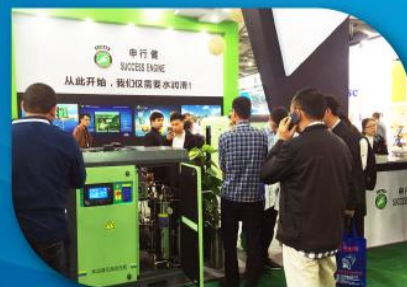


## SUCCESS ENGINE

SHANGHAI SUCCESS ENGINE COMPRESSOR CO., LTD  
No. 688 Xinhua Road, Nanshan Industry Zone, Songjiang Shanghai  
Website: <http://www.szsc98.com> E-mail: [seo@szsc98.com](mailto:seo@szsc98.com)



水润滑无油螺杆空压机 OIL-FREE SCREW AIR COMPRESSOR





》》》 让空气更洁净，让世界更清新！

Make the air cleaner and the world fresher!

呵护地球，从我做起！  
Protect the earth, start from us!

我们不污染地球，  
我们要洁净空气，  
我们更要大幅降低运营成本！



从此开始，我们仅需用水润滑！

From this time on, we only need water to lubricate.

申行健 水润滑无油螺杆空气压缩机 真空泵

SUCCESS ENGINE water-lubricated oil-free air compressor Vacuum pump



# 申行健

水润滑无油螺杆空压机 真空泵

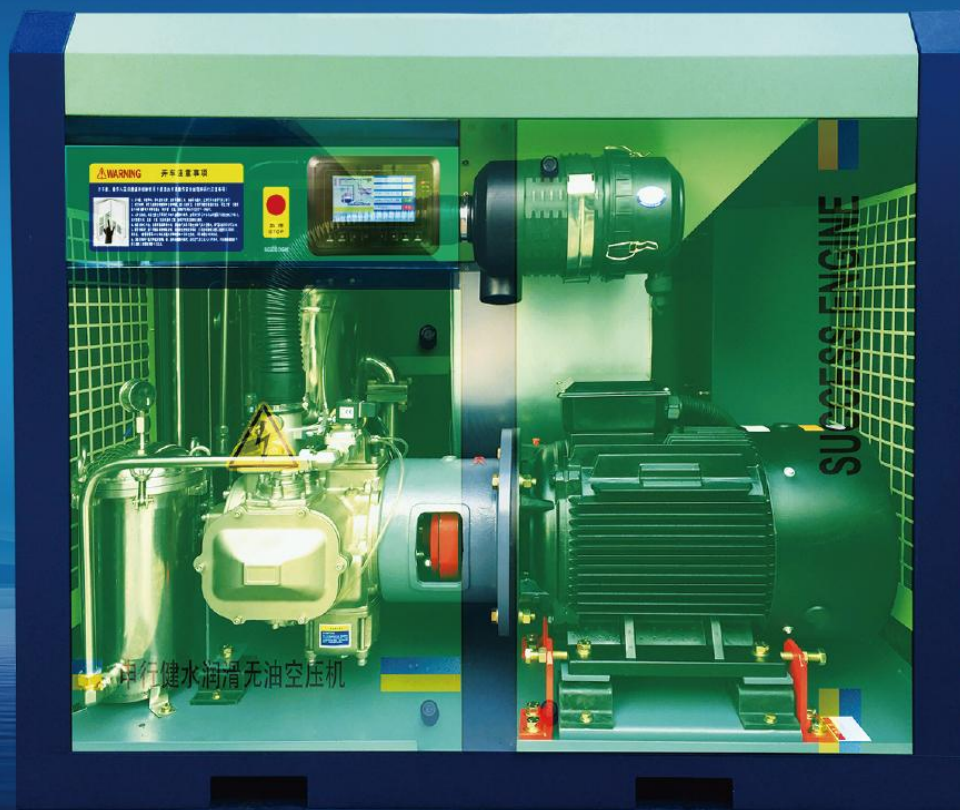
“SUCCESS ENGINE” water-lubricated oil-free compressor

Vacuum pump

ZW系列水润滑无油空气压缩机、真空泵、曝气机广泛应用于机械、电力、冶金、航空、化工、造纸、纺织、水务、烟草、电子、医药、食品、吹瓶制盖、污水处理、实验室等行业和特殊工艺要求领域。

主机采用不锈钢和特殊合金材料组成，系统配置高品质的不锈钢元件，润滑介质采用合乎饮用水标准的纯净水，整个工作系统中没有任何润滑油成分，因而，设备实现全无油排放的环保标准！

ZW series water-lubricated oil free air compressors, Vacuum pump, Aerator are widely used in electricity, aerospace, Papermaking, Tobacco, pharmaceutical, Sewage disposal, chemical, textile, electronics, water, food, bottle-blowing, laboratory and other field of high-end industries and special technical requirements. We use stainless steel single screw compressor air end, system equip with high performance stainless steel components, lubricating medium adopt purified water of drinkable standard, the entire compression system does not have any lubricating oil, therefore, the output of compressed air is absolutely pure without oil!



匠心设计  
表里如一



www.cnsec66.com

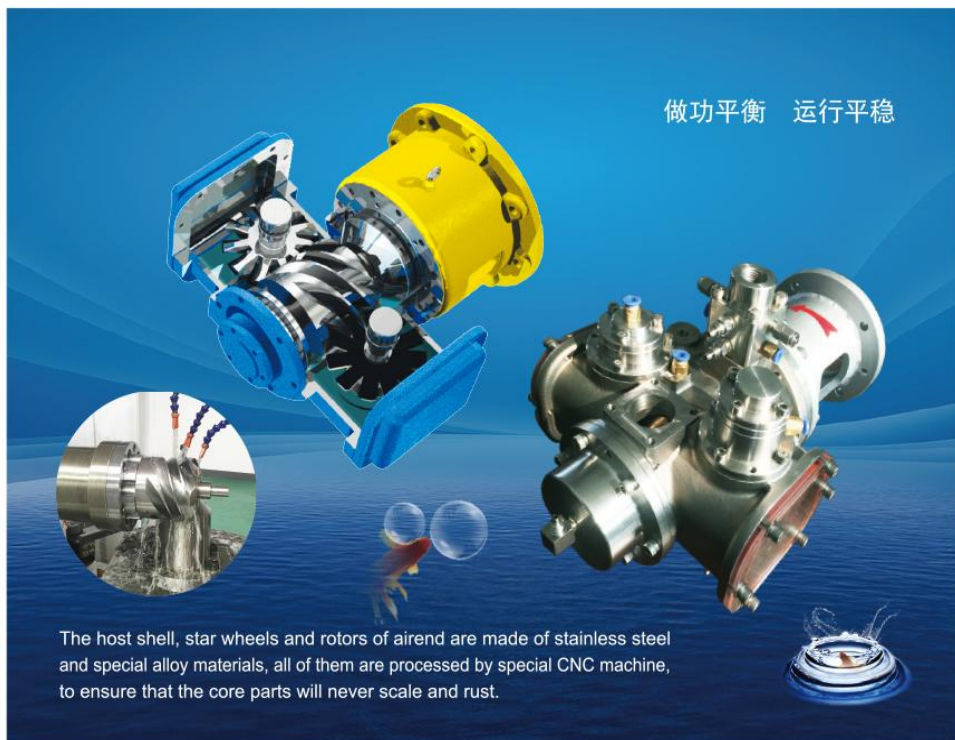


## 核心技术，修炼升级！

With core technology, practice to upgrade!

节能、高效、低成本！ energy saving, high efficiency and low cost!

主机的机壳、星轮和转子采用不锈钢和特殊合金材料，经特制数控专机加工而成，确保核心部件运行永不结垢和生锈。



## 水润滑压缩机优势 The advantages of water lubricated compressor

对比传统的干式两级压缩而言，申行健水润滑单级压缩具有无以伦比的先天优越性，仅低温压缩和低转速运行两大特点，其高容积效率和耐久的使用寿命是用户的最大回报；在运行中采用净水来润滑将大大降低用户的运行费用；绝对无油更是供气品质的最佳保障！

Compared with traditional dry type two-stage compression, SUCCESS ENGINE's water lubricated single-stage compression has congenital superiority, as the two unique characteristics of low temperature compression and low rpm operation, its high volumetric efficiency and durability are the greatest return to users; The use of water lubrication will greatly reduce the user's operating costs and absolutely oil-free is the best guarantee of the quality of air supply!





## 净水循环 经济环保

水润滑压缩机工作时以纯净水作为密封介质，运行转速和温度很低，因系统中没有润滑油，能保证排出的压缩空气洁净无油。对比传统干式压缩而言，由于干式压缩没有密封介质，运行时，只能依靠极高的转速经过一级到二级压缩排气，高转速产生高达200℃温度会使变速箱内的润滑油散发气味到大气中被压缩机吸入，难以保障排出空气的纯净。

Water lubrication compression, the purified water as sealing medium, the running speed and temperature is very low, and there is no lubricating oil in the system, so it can ensure that the discharge of compressed air is clean without any oil. Compared to the traditional dry compression, because there is no sealed medium, the operation must be run at high speed through the first and the second compressed to exhaust, high speed produce 200℃ high temperature, it will bring the lubricating oil in the gear to atmosphere and to be sucked by compressor, it is difficult to guarantee the purity of the exhaust air.



—— 纯水润滑，无油的保证！

Water recycling, economic and environmental protection

—— Pure water lubrication, the guarantee of oil-free!

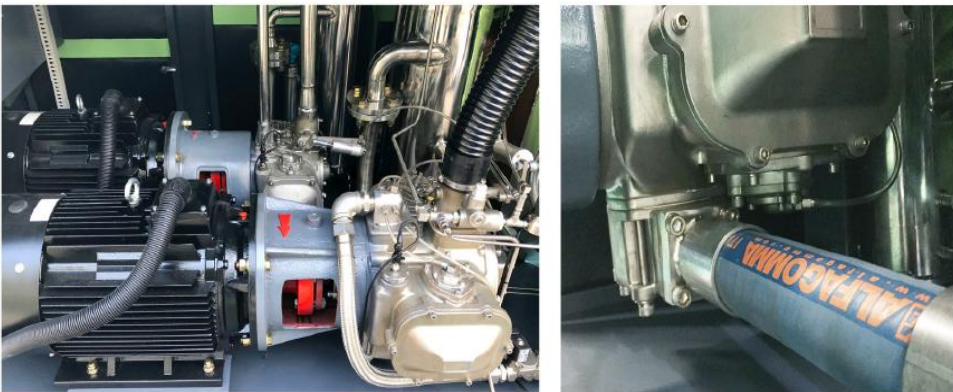




## 突出差异 创造玄机

整机系统采用不锈钢部件和符合食品级标准的控制部件组成，包括：压缩机主机、水气分离罐、控制阀、循环管路、连接件、过滤部件、水位控制器、给排水装置、系统软管等耐腐蚀材料部件，确保系统的绝对纯净。

The whole system is made of stainless steel components and food-grade control parts, including: compressor main aircend, water-air separation tank, control valve, circulating pipe, connecting piece, filter part, water level controller, water supply and drainage device, system soft pipe and other corrosion-resistant material parts to ensure that the system is absolutely pure.



匠心设计，品质的保障！

Ingenuity design, quality assurance!

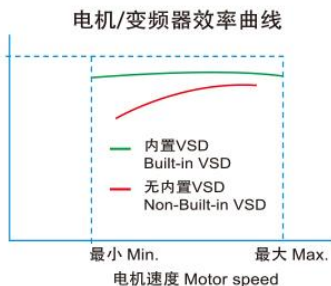




人文设计 心行合一 Humanized design

全系列采用变频调速技术，转速无极调节、气压稳定、启动平稳，实现功率随用气变化而改变，达到能源被有效利用。

The full series adopt variable frequency speed control technology, the speed can adjusted at no limit, the air pressure is stable and start smoothly, it can also achieve the power varies with the change of air consumption and realize the effective use of energy.



配置微电脑智能控制和供水净化系统，确保循环水不结水垢，使润滑、密封和冷却功能发挥至最佳；自动根据系统需要进行控制水、电动作，自动检测设备各关键点的保护设定值，实现整机的运行稳定和报警保护的齐全功能。

Configure intelligent microcomputer control system and water softening system to ensure that the circulating water does not scale, so that the lubrication, sealing and cooling function can to be the best. Control the water and electric automatically according to the system demand, automatic detect the protection set data of each key point, achieve the multi-functions of stable operation and alarm protection.



智能、节能、稳定、安全!

Intelligent, energy saving, stable, safe!



机旁控制 Local control



远程/联锁控制 Remote control



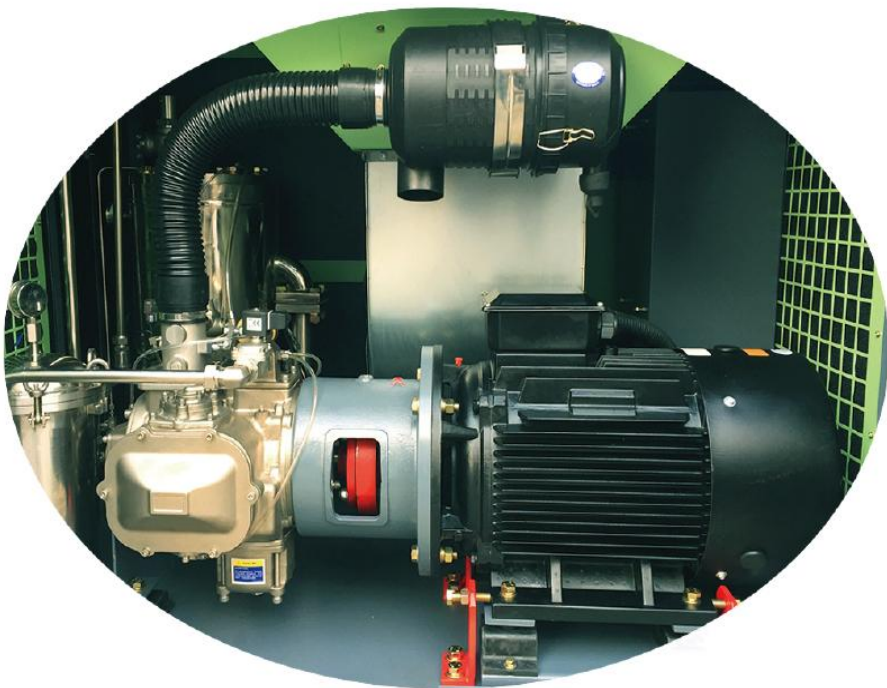


## 水润滑压缩机，结构简单，持久耐用！

Water lubricated screw compressor, simple structure and be durable!

水润滑无油压缩机实现低温压缩，低速运行，结构简单，维护方便，因而维护成本大大降低。显而易见，水润滑空压机优势极为明显。

Water lubricated oil-free screw air compressor has achieved the advantages of low-temperature compression, low-rpm operation, simple structure and convenient maintenance, so the maintenance costs are greatly reduced. Apparently, the advantages of water lubricant air compressor are extremely obvious.



直接传动 无需变速箱 结构简单 维护方便

Direct drive, without gearbox, simple structure, convenient maintenance!

—— 大幅降低运行和维护成本！

Greatly reduce operating and maintenance costs!

## 干式压缩机，结构复杂，维护繁琐！

干式空压机由于干摩擦压缩需要很高的转速，且必须先经过一级压缩后再进入二级压缩，高速需依靠变速箱增速，运行时会产生的高温更需要依赖中间冷却器和复杂的部件和管路来解决，致使结构设计复杂，维护繁琐，维护成本极高。

Dry type air compressor due to dry friction compression requires a high speed, and must go through first compression and then into the second compression. High speed is rely on gearbox to increase the speed, the high temperatures produced in operating need to solved by the intercooler, complex parts and pipelines, that resulting in complex structural design, cumbersome maintenance, and high maintenance costs.





申行健  
SUCCESS ENGINE® 水润滑无油螺杆压缩机  
OIL-FREE SCREW COMPRESSOR

》》》 空气压缩机 真空泵  
Gas compressor Vacuum pump

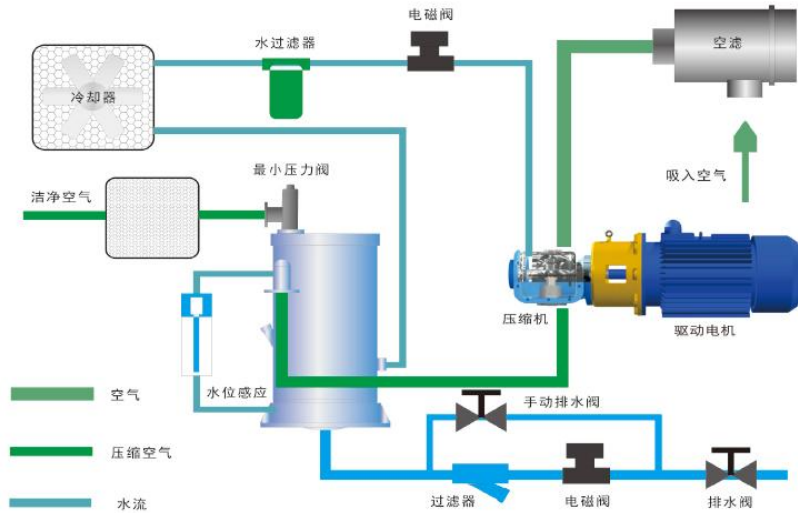


全国免费热线: 400 820 1006

www.cnsec66.com



水润滑无油螺杆压缩机系统流程 System flow chart



水润滑与干式机型的技术优劣势对比

项目	水润滑	干式	优劣势情况
1 压缩级数	单级	两级	干式两级压缩转速高，必须配置齿轮增速，结构复杂，维护成本高。
2 转速	2980r/min	18000r/min	干式转速高，机件容易磨损，噪音和震动相应增大，系统设计复杂，同时缩短机件的使用寿命。
3 运行温度	50℃以下	200℃上下	干式运行温度高，高温高速运行先天性缺陷，弊端显而易见。
4 无油保障	系统结构不需要润滑油，长期运行保证排出的空气纯净	系统结构需要润滑油，新机或许能保证排出空气无油	干式机高温高速运行，难以保证轴承和齿轮箱的密封，同时，在200℃高温运行时齿轮箱的润滑油也会散发油气味到大气中被压缩机吸入，难以长期保障排出空气的纯净。
5 润滑介质	纯净水	干摩擦	水润滑用的软化水成本极低，干摩擦有上述描述的很多弊端，且维护成本极高。
6 能效对比	2级以上能效	3级以下能效	水润滑几乎是等温压缩，能量消耗低，干摩擦从一级压缩后再进入二级压缩，高温压缩难以实现最佳能源效率。

常压系列水润滑无油空压机基本技术参数 SPECIFICATIONS OF SE11-250(KW)

型号 MODEL	功率 POWER kW	工作压力 PRESSURE bar	容积流量 AIR FLOW m³/min	噪音 NOISE LEVEL dB(A)	出口尺寸 OUTLET CONNECTION	机组重量 WEIGHT Kg	外形尺寸 DIMENSION L x W x H mm
ZW11A-7 ZW11A-10	11	7 10	1.60 1.40	66	Rp 3/4	460	1100X845X1260
ZW15A-7	15	7	2.50	67	Rp 3/4	620	1260X900X1360
ZW18A-7 ZW18A-10	18	7 10	3.00 2.50	67	Rp 3/4	750	1520X1060X1450
ZW22A-7 ZW22A-10	22	7 10	3.60 3.00	68	Rp 1	840	1520X1060X1450
ZW37A-7 ZW37A-10	37	7 10	6.20 5.80	71	Rp 1 1/2	1010	1760X1160X1550
ZW45W-7	45	7	8.2	73	Rp 2	930	1900X1250X1340
ZW55W-7 ZW55W-10	55	7 10	10.0 9.0	74	Rp 2	970	1900X1250X1340
ZW75W-7 ZW75W-10	75	7 10	13.0 10.0	75	Rp 2	1020	1900X1250X1340
ZW90W-7 ZW90W-10	90	7 10	15.0 12.8	76	Rp 2	2050	2200X1600X1700
ZW110W-7 ZW110W-10	110	7 10	20.0 17.8	78	DN 80	2330	2200X1600X1700
ZW132W-7 ZW132W-10	132	7 10	23.0 19.0	80	DN 80	2560	2200X1600X1700
ZW160W-7 ZW160W-10	160	7 10	26.0 22.6	82	DN 80	3000	2500X1800X1700
ZW250W-7 ZW250W-10	250	7 10	40.0 36.0	85	DN 100	4500	3000X2100X2000

容积流量参数为规定工况下(JB/T11882-2014标准要求:吸气绝压0.1Mpa/吸气温度20℃/吸气相对湿度为0) 此台压缩机可产生的最大容积流量。冷却方式(标配): 11-37KW为风冷却, 45-250KW为水冷却。变频启动。某些参数或要求根据实际需要可作变更, 请以售前技术交流为准。Specifications in this catalog are subject to change by SUCCESS ENGINE without notice and the detailed information is subject to Pre-sales consulting.





## 中压 水润滑无油压缩机 Medium pressure compressor

专业为PET吹瓶机配套使用设计

Specialized in matching design of PET bottle blowing machine

吹瓶空压机 (PET air compressor) 是吹瓶机气源装置中的主体, 它是将原动机的机械能转换成气体压力能的装置, 是压缩空气后吹瓶机专用的气压发生装置。中压空压机主要应用于吹瓶机配套行业。

### 中压系列水润滑无油空压机基本技术参数 SPECIFICATIONS OF ZW40-270(KW)

型号 MODEL	进气流量 AIR FLOW m <sup>3</sup> /min	排气压力 PRESSURE bar	电机功率 POWER (kW)	出口尺寸 OUTLET CONNECTION	机组重量 WEIGHT Kg	外形尺寸 DIMENSION L x W x H mm
ZW067W-25	2.0-6.2	16-25	37 + 30	DN 25	2050	2200X1300X1500
ZW074W-40	2.0-6.2	30-40	37 + 37	DN 25	2120	2200X1300X1500
ZW120W-25	3.0-10.5	16-25	75 + 45	DN 25	2650	2500X1600X1500
ZW145W-40	3.0-10.2	30-40	90 + 55	DN 25	2800	2500X1600X1500
ZW165W-25	5.2-15.3	16-25	90 + 75	DN 40	3100	2800X1800X1700
ZW180W-40	5.2-15.0	30-40	90 + 90	DN 40	3350	2800X1800X1700
ZW220W-25	6.5-20.2	16-25	132 + 90	DN 40	3800	3100X2000X1800
ZW270W-40	6.5-20.0	30-40	160 + 110	DN 40	4100	3100X2000X1800

进气流量参数为规定工况下 (JB/T11882-2014 标准要求: 吸气绝压0.1Mpa/吸气温度20℃/吸气相对湿度为0) 的容积流量。

本中压机型标准配置: 冷却方式为水冷却, 变频启动。某些参数或要求根据实际需要可作变更, 请以售前技术交流为准。

Specifications in this catalog are subject to change by SUCCESS ENGINE without notice and the detailed information is subject to Pre-sales consulting.



## 低压 水润滑无油压缩机 Low pressure compressor

为低气压行业量身定制

Tailor-made for low pressure industry

低压空压机主要应用于发酵、纺织、印染、污水处理等行业

Low pressure air compressor is mainly used in fermentation, textile, printing and dyeing, sewage treatment and other industries.



### 低压系列水润滑无油空压机基本技术参数 SPECIFICATIONS OF ZW11-160(KW)

型号 MODEL	容积流量 AIR FLOW m <sup>3</sup> /min	排气压力 PRESSURE bar	电机功率 POWER kW	噪音 NOISE LEVEL dB(A)	出口尺寸 OUTLET CONNECTION	机组重量 WEIGHT Kg	外形尺寸 DIMENSION L x W x H mm
ZW11A-3	0.9-3.1	3	11	60	Rp 1-1/2	630	1480X850X1450
ZW11A-4	0.7-2.5	4					
ZW15A-3	1.2-4.2	3	15	63	Rp 2	660	1680X1000X1550
ZW15A-4	2.0-3.7	4					
ZW22A-3	2.0-6.2	3	22	66	Rp 2-1/2	980	1780X1100X1650
ZW22A-4	1.6-5.3	4					
ZW37W-3	3.2-10	3	37	70	Rp 2-1/2	1200	2000X1300X1750
ZW37W-4	2.6-8.6	4					
ZW45W-3	4.2-13	3	45	72	Rp 3	1400	2000X1300X1750
ZW45W-4	3.6-10	4					
ZW55W-3	5.2-17	3	55	76	DN 100	2300	2500X1550X1850
ZW55W-4	4.5-13.5	4					
ZW75W-3	7.2-23	3	75	78	DN 100	2450	2500X1550X1850
ZW75W-4	6.5-20	4					
ZW90W-3	9.2-27	3	90	79	DN 125	2550	2500X1550X1850
ZW90W-4	7.8-24	4					
ZW110W-3	11-33	3	110	80	DN 125	2950	3200X1950X2150
ZW110W-4	9.2-28	4					
ZW132W-3	15-43	3	132	82	DN 150	4250	3300X2050X2250
ZW132W-4	11-36	4					
ZW160W-3	18-50	3	160	85	DN 150	4500	3300X2050X2250
ZW160W-4	15-42	4					

低压机型可提供1.5-4bar工作压力范围, 容积流量以3bar工作压力为基准; 当压力上升或下调时, 容积流量会随之有所减少或增加。请根据用气要求在售前确定工作压力, 以实现最佳的能效目的; 申行健保留样本内容的更新权利, 某些参数根据实际情况可作调整。



## 真空泵 Water lubricated Vacuum pump

### 水润滑无油螺杆真空泵 Water Lubricated Vacuum Pump

水润滑真空泵采用变频调速技术，运行根据生产线参数变化功率随之调整，保持真空泵始终工作在最佳的运行工况。Water lubricated vacuum pump adopts frequency conversion technology, the power can adjust with the change of production line parameters, and keeps vacuum pump always working in the best operating condition.

真空系统可根据用户需求定制，运行情况选择最合理的真空点设计，真空度相近点，抽吸点进行合并，使真空泵始终运转在泵和电机的特性线高效区。

Vacuum system can be customized design according to client's needs, the operation choose the most reasonable vacuum point, the vacuum degree proximity point, suction point is combined to make the vacuum pump always run in high-efficiency area of the characteristic line of the pump and the motor.



水润滑无油螺杆真空泵从喷油润滑跨越到无油润滑时代，很大程度上推动了无油螺杆真空泵的应用和发展，传统的真空泵已无法满足抗腐蚀和环保的要求，随着用户的环保意识增强，这种先进、智能、环保、节能的水润滑无油螺杆真空泵必将是用户的最佳选择。

The water lubricated oil-free screw vacuum pump spans from oil-injection lubrication to oil-free water lubrication, which greatly promotes the application and development of oil-free screw vacuum pumps. Traditional vacuum pumps have been unable to meet the requirements of corrosion resistance and environmental protection, with the increasing environmental awareness of users, this advanced, intelligent, environmentally friendly, energy-saving water lubricated oil-free screw vacuum pump will be the best choice for users.

真空系统提供成套设备、系统解决方案：包含汽水分离器、冷却器、过滤器、消音器、阀门、仪表、管件以及全自动化控制系统在线监控真空度和抽气流量。

Vacuum system provides complete equipment and system solutions: including water-air separator, cooler, filter, silencer, valves, meters, fittings and fully automated control system for online monitoring of vacuum degree and pumping flow.

### 真空泵系列水润滑无油真空泵基本技术参数 SPECIFICATIONS OF ZW2.2-75(KW)

型号 MODEL	电机功率 POWER kW	吸气量 Inspiratory capacity m <sup>3</sup> /min	极限真空度 Limit vacuum (kpa)	连接尺寸 CONNECTION	机组重量 WEIGHT Kg	外形尺寸 DIMENSION L x W x H mm
WVP2A	2.2	1.6	-98	DN 40	430	1000X830X1150
WVP3A	3.5	2.6	-98	DN 40	600	1160X860X1180
WVP5A	5.5	3.8	-98	DN 50	760	1420X1060X1180
WVP7A	7.5	5.0	-98	DN 50	900	1620X1160X1250
WVP11A	11	8.0	-98	DN 65	960	1660X1160X1450
WVP15A	15	10	-98	DN 80	1100	1760X1200X1580
WVP22A	22	17	-98	DN 100	1600	1960X1500X1780
WVP30A	30	21	-98	DN 100	1850	2160X1600X1780
WVP37A	37	26	-98	DN 125	1900	2160X1600X1780
WVP45W	45	31	-98	DN 150	2200	2360X1700X1700
WVP55W	55	42	-98	DN 200	3500	2860X1900X1900
WVP75W	75	56	-98	DN 200	3600	2960X1950X1980

根据用户所需真空系统参数定制，螺杆真空泵抽气流量为：1.6~56m<sup>3</sup>/min；大流量真空泵可参见离心真空泵系列介绍。

Vacuum system can be customized design according to client's need, screw vacuum pump suction flow: 1.6~56m<sup>3</sup>/min, for large flow vacuum pump, please refer to the introduction of centrifugal vacuum pump series.



**服务用户 至始至终** Serve users From beginning to end

申行健，正以她的服务理念向用户呈现空压机精品，产品广泛应用于国家重点项目工程。

Success Engine, is relying on her service concept to supply high-quality compressors to the users, the products are widely used in national key projects

以客户为中心，

以超出客户期望为宗旨，保证产品完美交付用户使用！

Take the customer as the center, to exceed the customer expectation, to ensure that the product is delivered to the user perfectly!



洁净生产区 Cleaner Production Zone



严格测试 Strict testing



包装程序 Packaging procedures



安装服务 Installation service



食品医药行业 Food and Pharmaceutical Industry



特别定制 TSpecially customized



国防军工 National defense industry



电子化工行业 Electronic Chemical Industry



# 静心修炼，自强不息！

—— 总理把中国制造带向世界！

The prime minister brought the "Made-in-China" to the world!

选用申行健，创新走在前；  
择优为己任，造福地球人；  
好的空压机，高的性价比；  
产洁净空气，收投资效益；  
品质得保障，益企业成长。

选择好产品  
创造高收益

》》》 与用户分享 Share with users

向客户展现创新产品！

Continuously Show New Products to Customers!





## 水润滑空压机 Water lubricated oil-free air compressor

申行健，带您走进风韵流转的现代化厂区，体味诗与思的完美结合！

SUCCESS ENGINE takes you into the charming modern plant, taste the perfect combination of poetry and thinking!



## 产自此“诗情画意”厂区

Water lubricated oil-free air compressor, produced in this "poetic sentiment" plant!

诗一般的申行健，意在向人们传递空压机制造业也可以有着诗一般的环保理念，更可以营造实用与美感和谐相融的品质。

Poetic manner of SUCCESS ENGINE, intended to convey to the people that air compressor manufacturing industry can not only have a poetic concept of environmental protection, but also to create a quality which harmonious combined by practical and beauty.

Come to SUCCESS ENGINE factory, to witness how the oil-free air compressor is made!

来申行健厂区，见证无油空压机是怎样炼成》》》



## 申行健 水润滑无油空压机

诗一般的环境，源于企业家诗一般的心境！既彰显了厂区主人的静气和涵养，又见证了作为空压机厂商的雄厚实力！

The poetic environment comes from the entrepreneur's poetic mind! Not only demonstrates the factory owner's cultivation, but also witnessed the strength as a compressor manufacturer.

—— 从这里开启！

来申行健厂区，见证无油空压机是怎样炼成 》》》

Come to SUCCESS ENGINE factory, to witness how the oil-free air compressor is made





## 申行健 水润滑无油空压机



茶吧 Tea bar



茶艺服务 Tea Art



贵宾接待室 VIP Reception Room

—— 把产品当艺术品来做 Do the products as works of art

诗一般的厂区环境，蕴含了一个企业的文化气息和品牌内涵，颠覆了机械生产行业的传统，铸就行业经典的最高境界！

Poetic plant environment contains a corporate culture and brand meaning, subversion of the machinery industry tradition, create the highest level of compressor industry.



古筝二胡交响 Zither-Urheen Symphony



活动培训 Activity &amp; Training Room



办公室 Office



多功能厅 Multifunction Room





**SUCCESS ENGINE**<sup>®</sup>  
ROTARY SCREW AIR COMPRESSOR

水润滑无油螺杆空压机  
OIL-FREE SCREW AIR COMPRESSOR



》》》 我们将源源不断向世界提供洁净压缩空气！ We producer of the Clean Compressed Air.