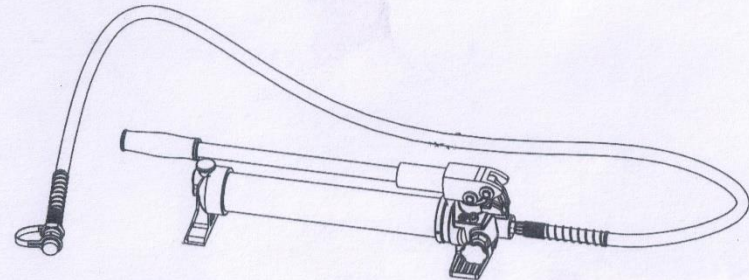


# Instruction Manual

Hydraulic Pump CP Series

# Instruction Manual

Hydraulic Pump CP Series



Due to continuing improvements, actual product may differ slightly from the product described herein.



## WARNING:

Read this material before using this product.  
Failure to do so can result in serious injury.

**SAVE THIS MANUAL FOR  
FUTURE REFERENCE**

HYDRAULIC PUMP



We make every effort to assure that its products meet high quality and durability standards, and warrants to the original purchaser that this product is free from defects in materials and workmanship for the period of one year from the date of purchase(90 days if used by a professional contractor or if used as rental equipment). This warranty does not apply to damage due directly or indirectly, to misuse, abuse, negligence or accidents, repairs or alterations outside our facilities, normal wear and tear, or to lack of maintenance. We shall in no event be liable for death, injuries to persons or property, or for incidental, contingent, special or consequential damages arising from the use of our product. Some states do not allow the exclusion or limitation of incidental or consequential damages, so the above limitation of exclusion may not apply to you. THIS WARRANTY IS EXPRESSLY IN LIEU OF ALL OTHER WARRANTIES, EXPRESS OR IMPLIED, INCLUDING THE WARRANTIES OF MERCHANTABILITY AND FITNESS.

To take advantage of this warranty, the product or part must be returned to us with transportation charges prepaid. Proof of purchase date and an explanation of the complaint must accompany the merchandise. If our inspection verifies the defect, we will either repair or replace the product at our election or we may elect to refund the purchase price if we cannot readily and quickly provide you with a replacement. We will return repaired products at our expense, but if we determine there is no defect, or that the defect resulted from causes not within the scope of our warranty, then you must bear the cost of returning the product.

The warranties give you specific legal rights and you may also have other rights which vary from place to place

## PART LIST

| No | Description                | QTY | No | Description               | QTY |
|----|----------------------------|-----|----|---------------------------|-----|
| 1  | hand grip                  | 1   | 23 | o-ring                    | 2   |
| 2  | active handle              | 1   | 24 | hexagonal screw(M10Φ13.6) | 2   |
| 3  | handle hand                | 1   | 25 | steel ball(Φ6)            | 1   |
| 4  | elastic snap ring          | 4   | 26 | hexagonal screw(M8*10)    | 1   |
| 5  | pin                        | 2   | 27 | hexagonal screw(M10*10)   | 1   |
| 6  | steel ball(Φ8)             | 1   | 28 | steel ball(Φ8)            | 1   |
| 7  | spring for safety valve    | 1   | 29 | steel ball(Φ8)            | 2   |
| 8  | o-ring                     | 1   | 30 | hexagonal screw(M8*10)    | 2   |
| 9  | hexagonal screw(M10*16.4)  | 1   | 31 | pump body                 | 1   |
| 10 | steel ball(Φ8)             | 1   | 32 | valve stem                | 1   |
| 11 | safety valve core          | 1   | 33 | o-ring                    | 1   |
| 12 | hexagonal screw(M10*10)    | 1   | 34 | o-ring                    | 1   |
| 13 | o-ring                     | 1   | 35 | valve cover               | 1   |
| 14 | hexagonal screw(M10Φ8)     | 1   | 36 | elastic straight pin      | 1   |
| 15 | o-ring                     | 1   | 37 | turn screw                | 1   |
| 16 | plastic ring(Φ13*Φ10*1.4)  | 1   | 38 | o-ring                    | 2   |
| 17 | o-ring                     | 1   | 39 | shaft nut                 | 1   |
| 18 | plastic ring(Φ34*Φ28*1.68) | 1   | 40 | oil sac                   | 1   |
| 19 | plunger                    | 1   | 41 | screw                     | 1   |
| 20 | steel ball(Φ6)             | 2   | 42 | o-ring                    | 1   |
| 21 | steel ball(Φ8)             | 2   | 43 | back seat                 | 1   |
| 22 | spring(Φ0.4*Φ6.8*22)       | 2   |    |                           |     |

SAVE THIS MANUAL

Keep this manual for the assembly, operation, inspection, maintenance and cleaning procedures. Write the purchase date. Keep this manual and the receipt in a safe and dry place for future reference.

IMPORTANT SAFETY INFORMATION

This is the safety alert symbol. It is used to alert you the potential personal injury hazards. Obey all safety messages that follow these symbols to avoid possible injury or death.

**▲DANGER**

DANGER indicates a hazardous situation which, if not avoided, will result in death or serious injury.

**▲WARNING**

WARNING indicates a hazardous situation which, if not avoided, could result in death or serious injury.

**▲CAUTION**

CAUTION, used with the safety alert symbol, indicates a hazardous situation which, if not avoided, could result in minor or moderate injury.

## GENERAL SAFETY RULE

TO WORK IN SAFE CONDITIONS WITH THIS TOOL, IT IS IMPERATIVE TO READ CAREFULLY THE DIRECTIONS FOR USE AND TO FOLLOW THE INSTRUCTION IT CONTAINS. IF YOU DONOT RESPECT THE INFORMATION WRITTEN IN THE INSTRUCTION MANUAL, THE WARRANTY WILL BE CANCELLED.

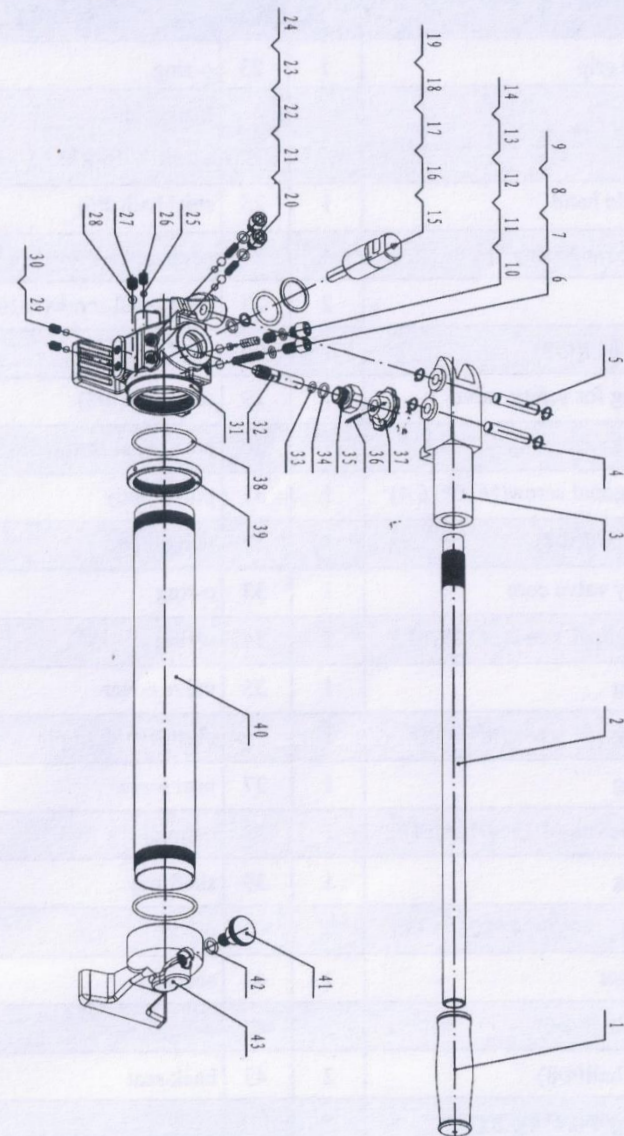
### 1. Work area safety

- Keep work area clean and well lit. Cluttered or dark areas invite accidents.
- This tool is not insulated; please do not use it on live conductor.
- Keep children and bystander away while operating the hydraulic pump. Distractions will cause you to lose control.
- Please do not use or store this tool under high temperature, or one surrounding filling with corrosive fluid. Pay attention to the sealing kits becoming aging.

### 2. Personal safety

- Stay alert, watch what you are doing and use common sense when operating the tool. Do not use the tool while you are tired or under the influence of drugs, alcohol or medication.. A moment of inattention while operating hydraulic tools may result in serious personal injury.
- Use safety equipment. Always wear eye protection. Safety equipment such as dust mask, non-skid shoes, hard hat, or hearing protection used for appropriate conditions will reduced personal injuries.
- Dress properly. Do not wear loose clothing or jewelry. Keep your hair, clothing and gloves away from moving parts. Loose clothes jewelry or long hair can be caught in moving parts.
- Do not force the tool. Use the correct power tool for your application .The correct power tool will do the job better and safer at the rate for which it was designed.

## MODEL CP-390/CP-630/CP-700/CP-700B



**PLEASE READ THE FOLLOWING CAREFULLY**

THE MANUFACTURER AND/OR DISTRIBUTOR HAS PROVIDED THE PARTS LIST AND ASSEMBLY DIAGRAM IN THIS MANUAL AS A REFERENCE TOOL ONLY. NEITHER THE MANUFACTURER NOR DISTRIBUTOR MAKES ANY REPRESENTATION OR WARRANTY OF ANY KIND TO THE BUYER THAT HE OR SHE IS QUALIFIED TO MAKE ANY REPAIRS TO THE PRODUCT, OR THAT HE OR SHE IS QUALIFIED TO REPLACE ANY PARTS OF THE PRODUCT. IN FACT, THE MANUFACTURER AND/OR DISTRIBUTOR EXPRESSLY STATES THAT ALL REPAIRS AND PARTS REPLACEMENTS SHOULD BE UNDERTAKEN BY CERTIFIED AND LICENSED TECHNICIANS, AND NOT BY THE BUYER. THE BUYER ASSUMES ALL RISK AND LIABILITY ARISING OUT OF HIS OR HER REPAIRS TO THE ORIGINAL PRODUCT OR REPLACEMENT PARTS THERETO, OR ARISING OUT OF HIS OR HER INSTALLATION OF REPLACEMENT PARTS THERETO.

- i. Store idle power tools out of the reach of children and do not allow persons unfamiliar with the hydraulic pump. This tool is dangerous in the hands of untrained users.
- j. Maintain power tools. Check for misalignment or binding of moving parts, breakage of parts and any other condition that may affect the Hydraulic Pump operation. If damaged, have the Hydraulic pump repaired before use. Many accidents are caused by poorly maintained power tools.
- k. Use the Hydraulic Pump, accessories and tool bits etc., in accordance with these instructions and in the manner intended for the particular type of tool, taking into account the working conditions and the work to be performed. Use of the Hydraulic Pump for operations different from those intended could result in a hazardous situation.

**3. Service**

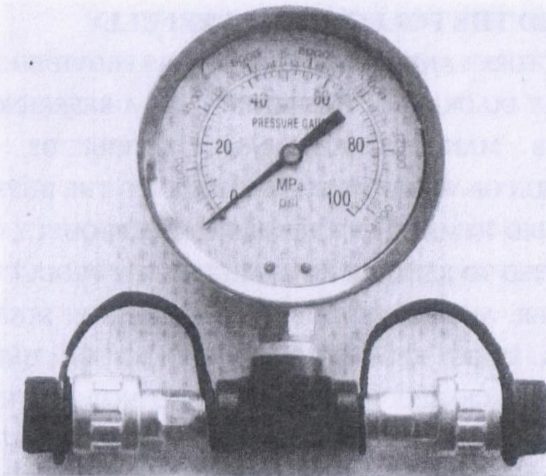
Have your Hydraulic Pump serviced by a qualified service technician using only identical replacement parts. This will ensure that the safety of the Hydraulic Pump Kit is maintained.

## SPECIFIC SAFETY RULES

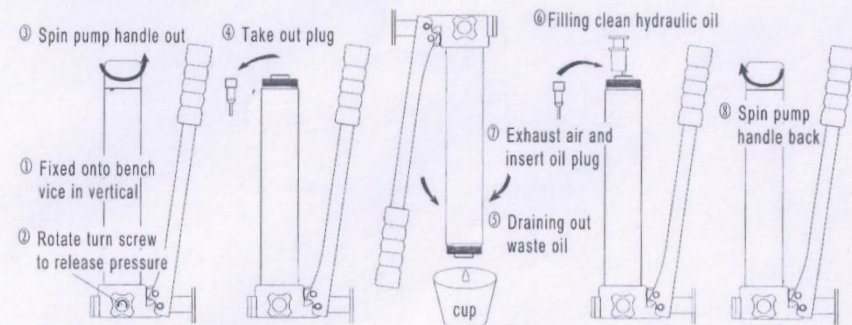
1. Maintain labels and nameplates on the tool which carry important safety information. If unreadable or missing, contact the agent to replace.
2. This product is not a toy, keep it out of reach of children.
3. Do not put your fingers in the head of the working head when you are operating, your fingers could be pinched very severely.
4. Connect the pump with the working head completely.
5. Do not fill the oil when the pressure is not fully released.
6. Do not carry the pump by the hose.
7. Do not lay on or drop heavy subject on the hose.
8. Prohibit bend the hose or loosen the coupler when the pressure not released
9. Please contact the distributor or manufacturer immediately if the rated pressure not reached. Never try any adjustment by yourself.
10. The built-in safety valve goes through strict pressure test before marketing, please do not adjust it by unprofessional person. If the pressure is not enough, please return the tool back to the service center. The tool only can be re-used after checking and testing by trained person.
11. The warnings, precautions, and instructions discussed in this instruction manual cannot cover all possible conditions and situations that may occur. It must be understood by the operator that common sense and caution are factors which cannot be built into this product, but must be supplied by the operator.



**SAVE THIS INSTRUCTIONS**



## ADDING HYDRAULIC OIL:



## MAINTENANCE AND SERVICING

### **⚠WARNING**

Damaged equipment may cause serious personal injury. Do not use damaged equipment. If abnormal noise or vibration occurs, have the problem corrected before further using.

1. **Before each using**, inspect the general condition of the tool. Check for the coupler is clean, Check for loose screws, misalignment or binding of moving parts, cracked or broken parts, or any other condition that may affect its safe operation.
2. **After using**, clean external surfaces of the tool with clean, moist, smear the rust preventing oil on the metal surface of the tool and the dies to avoid rusty. Store the tool in the dry environment. the coupler should be covered by the cap in timely, otherwise the dust will enter into and pollute the oil.
3. Service to the tool should only be done by a qualified Service Technician.
4. In order to prolong the life of the tool please change the oil per year. Make sure the oil filtered by 120 mesh net or over 30 $\mu$ m strainer. Meantime avoid the dusty into the oil cup.
5. After a long time using, the sealing kits will be damaged, if there is leakage please contact with the manufacturer and/or the distributor to change the sealing kits.



The dust or air inside the tool will damage the sealing kit so caused the tool lose function. Make sure the oil is clear and no dust entering into oil when changing oil. Wait for a while and exhaust the oil completely out of the oil tube before inserting the oil plug.

### **⚠CAUTION**

Please wear the rubber gloves to avoid skin touching the oil directly, if touches it in careless, please wash the skin by soap water in timely. In order to protect the environment please drain the waste oil to the treatment center where was approved by government.

### **Tips:**

One T Coupler Pressure gauge is recommended to match with the pump, it can show the pressure status.

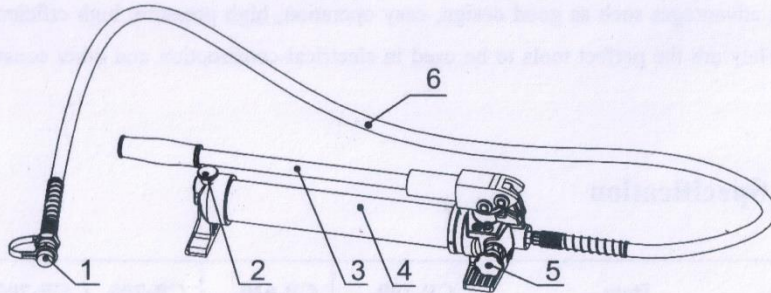
## UNDERSTAND YOUR TOOL

CP series hydraulic pump are used for connecting with hydraulic working head. They own many advantages such as good design, easy operation, high pressure, high efficiency and etc. They are the perfect tools to be used in electrical construction and other construction site..

### 1. Specification

| Item                |               | CP-180       | CP-390  | CP-700  | CP-700B | CP-700L |
|---------------------|---------------|--------------|---------|---------|---------|---------|
| Max output pressure | Low pressure  | 2 MPa        | 2 MPa   | 2 MPa   | 2 MPa   | 2 MPa   |
|                     | High pressure | 40 MPa       | 70 MPa  | 70 MPa  | 70 MPa  | 70 MPa  |
| Output of the oil   | Low pressure  | 4 cc         | 4cc     | 11 cc   | 10 cc   | 10 cc   |
|                     | High pressure | 1 cc         | 1 cc    | 1.4 cc  | 1.8 cc  | 1.4 cc  |
| Capacity of oil     |               | 230 cc       | 450 cc  | 900 cc  | 2800 cc | 900 cc  |
| Weight              |               | 8.8 LB       | 11.0 LB | 22.0 LB | 33.0 LB | 17.6 LB |
| Hydraulic oil       |               | 15#          |         |         |         |         |
| Direction of piston |               | double       |         |         |         |         |
| Ambient temperature |               | -20°C ~ 40°C |         |         |         |         |

2. Description of the components.



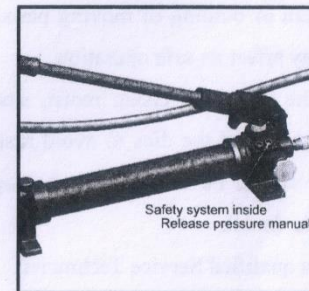
| Code | Name          | Function  |
|------|---------------|---|
| 1    | coupler       | for connecting with working head                      |
| 2    | screw         | for covering the oil tube to prevent oil from leaking |
| 3    | active handle | for operation   |
| 4    | Pump body     | for storing oil                                       |
| 5    | Turn screw    | for releasing pressure                                |
| 6    | hose          | for transporting oil                                  |

**OPERATING INSTRUCTIONS.**

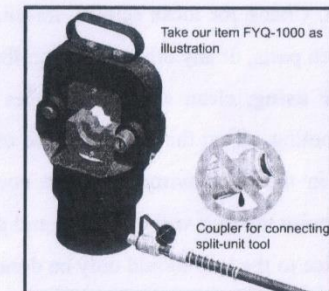
Read the entire SAFETY INFORMATION section at the beginning of this manual including all text under subheadings therein before using this product.

**CAUTION** Please do not knock any part of the tool; otherwise it is dangerous to operator.

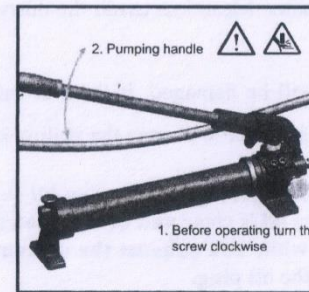
Please refer the illustration below



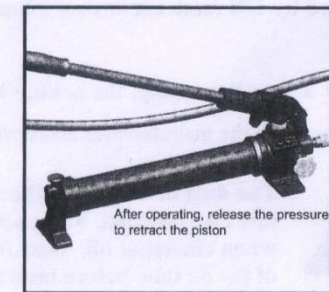
1.



2.



3.



4.

**DANGER**

The coupler can connect the pump with other tool quickly and easily. The male and female coupler must connect well, otherwise it may cause hurt to operator.

**WARNING**

Pumping the handle gently to make the oil flows smoothly, otherwise it will damage the hydraulic system.