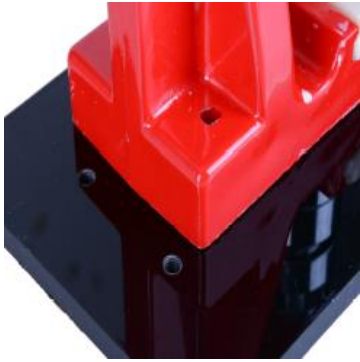


ASSEMBLY



Step 1: use $\phi 6$ Allen key to screw body and base plate with a bolt and a washer.



Step 2: check the mold, make sure two baffles on the middle position. If the baffles is shifting, rotating the mold to the middle position and use $\phi 8$ Allen key to fasten it.



Step 3: set into upper mold. Align the bump with the groove.



Step 4: hold up the upper mold, make sure there is no gap in the upper mold. Then sliding mold slide to the body groove.



Step 5: put two nails in holes to secure the mold.



Step 6: screw handle to the body. Press the handle without badge material, make sure the mold is in the correct place.

Tips



When working long hours, maybe there make some waste, pls rub lubricating oil to the mold in red circle.

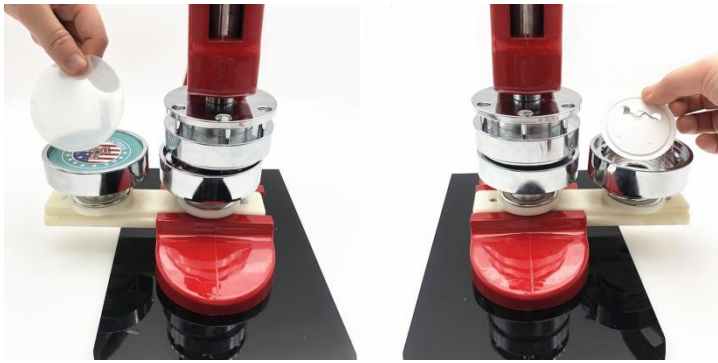
Paper Cutter



APPLICATION



Step 1: place metal tin shell in left mold. Then place circular printing paper on metal tin shell. The paper size should be the same size to the plastic film.



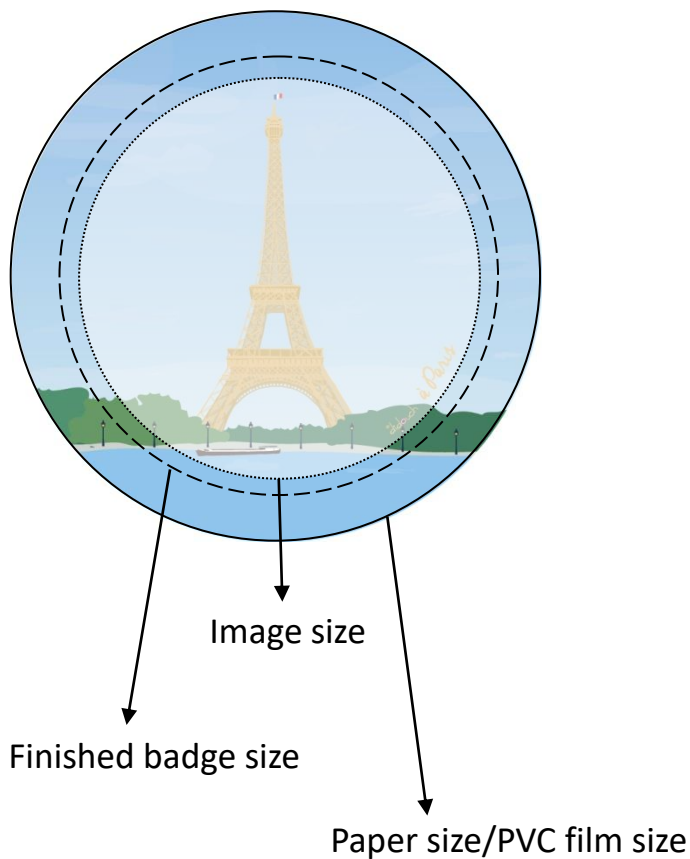
Step 2: place plastic film on circular printing paper. Then sliding mold slide, place plastic pin badge on right mold.



Step 3: press down the handle. Make sure there will be some gap in the upper mold when you press the left mold.



Step 4: sliding mold slide, press down the handle. There must be no gap in the upper mold when press the right mold.



Badge size	Image size	Finished badge size	Paper size PVC film size
25mm	22mm	25mm	35mm
32mm	29mm	32mm	44mm
37mm	33mm	37mm	48.5mm
44mm	40mm	44mm	54mm
50 mm	45mm	50mm	60.8 mm
56 mm	51 mm	56mm	66 .5mm
58mm	53mm	58mm	70mm
75mm	70mm	75mm	86mm